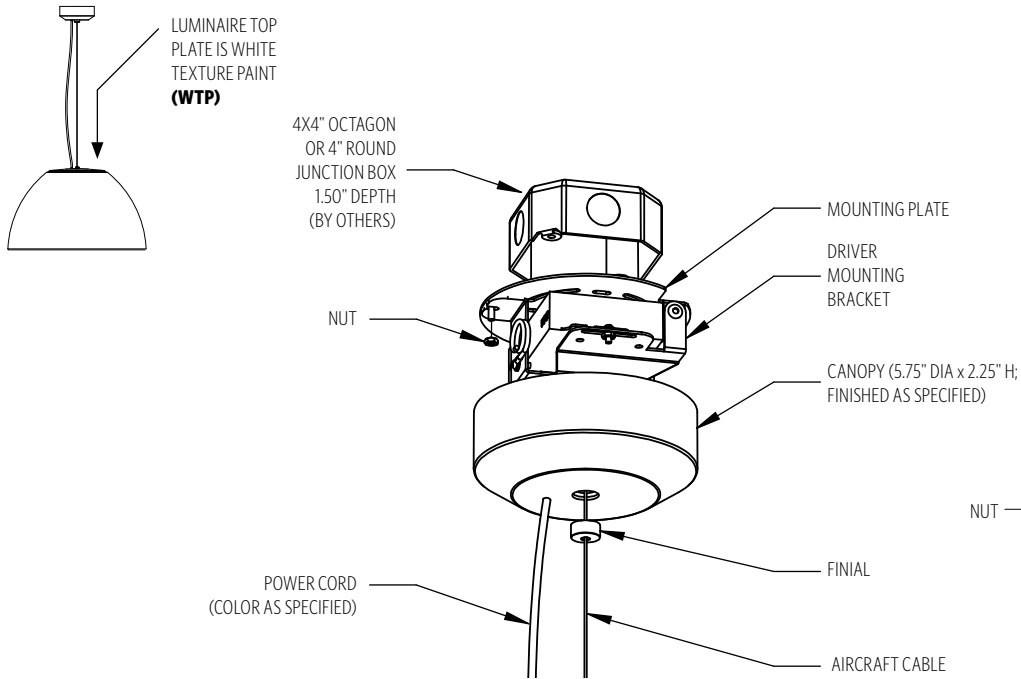


HANGING SYSTEM

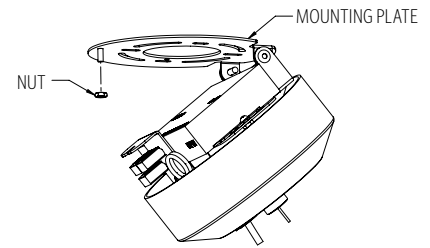
P1FK PENDANT WITH 5.75" SURFACE MOUNT CANOPY, SINGLE CENTER AIRCRAFT CABLE AND POWER CORD; MOUNTS TO 4X4 OCTAGON J-BOX (BY OTHERS); INTEGRAL DRIVERS; (**NOTE:** 18" AND 24" LED1, LED2, WD1 ONLY)



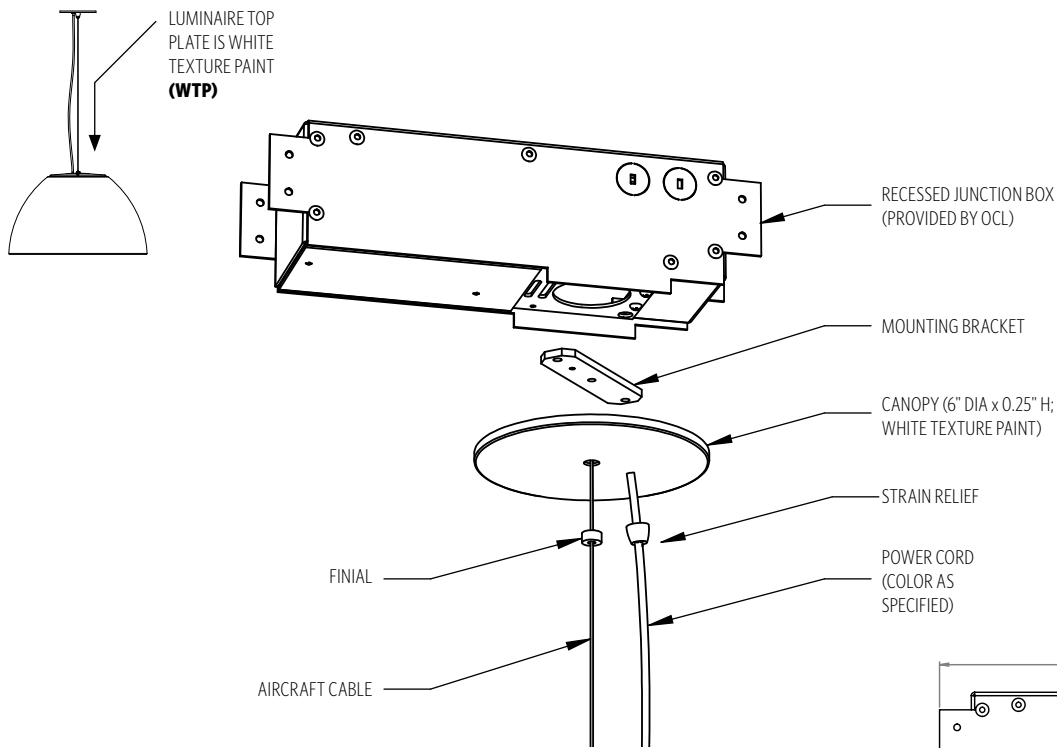
MOUNTING INFORMATION CHART

LUMINAIRE DIAMETER	LUMINAIRE WEIGHT	MIN/MAX OAH
18"	6 LBS	18"/144"
24"	12 LBS	21.5"/144"

P1FK ships with one of three OAH's (48", 100" or 144") and is field adjustable to the desired height.



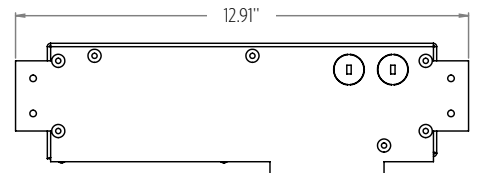
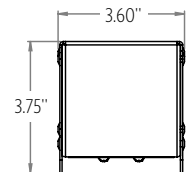
P1FB PENDANT WITH FLAT CANOPY, SINGLE CENTER AIRCRAFT CABLE AND POWER CORD; MOUNTS TO OCL RECESSED J-BOX (PROVIDED BY OCL) **NOTE:** LED1, LED2, WD1 ONLY



MOUNTING INFORMATION CHART

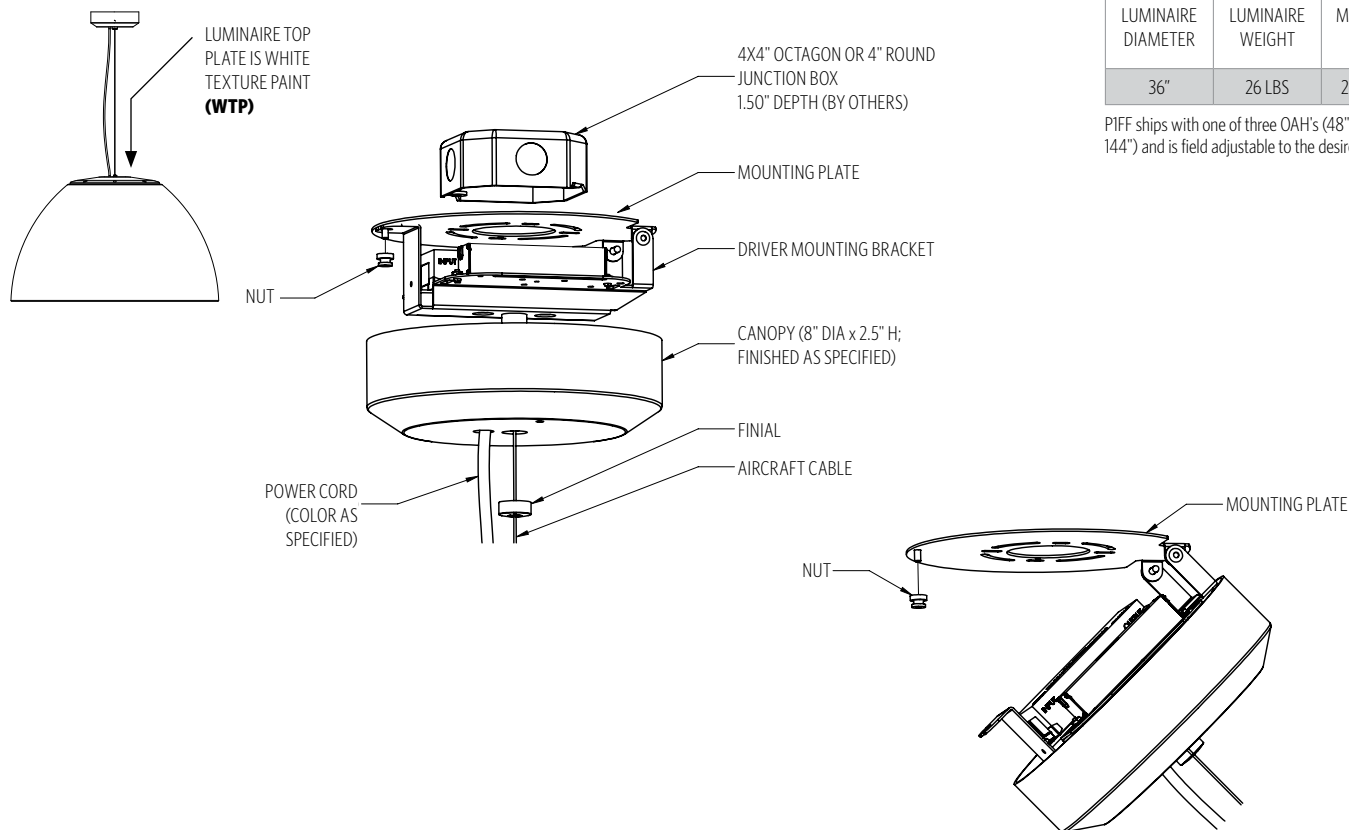
LUMINAIRE DIAMETER	LUMINAIRE WEIGHT	MIN/MAX OAH
18"	6 LBS	16"/144"
24"	12 LBS	19.5"/144"
36"	26 LBS	23"/144"

P1FB ships with one of three OAH's (48", 100" or 144") and is field adjustable to the desired height.



PROFILE VIEW
RECESSED JUNCTION BOX

PIFF PENDANT WITH 8" SURFACE MOUNT CANOPY, SINGLE CENTER AIRCRAFT CABLE AND POWER CORD; MOUNTS TO 4X4 OCTAGON J-BOX (BY OTHERS); INTEGRAL DRIVERS; (**NOTE** 36" ONLY)

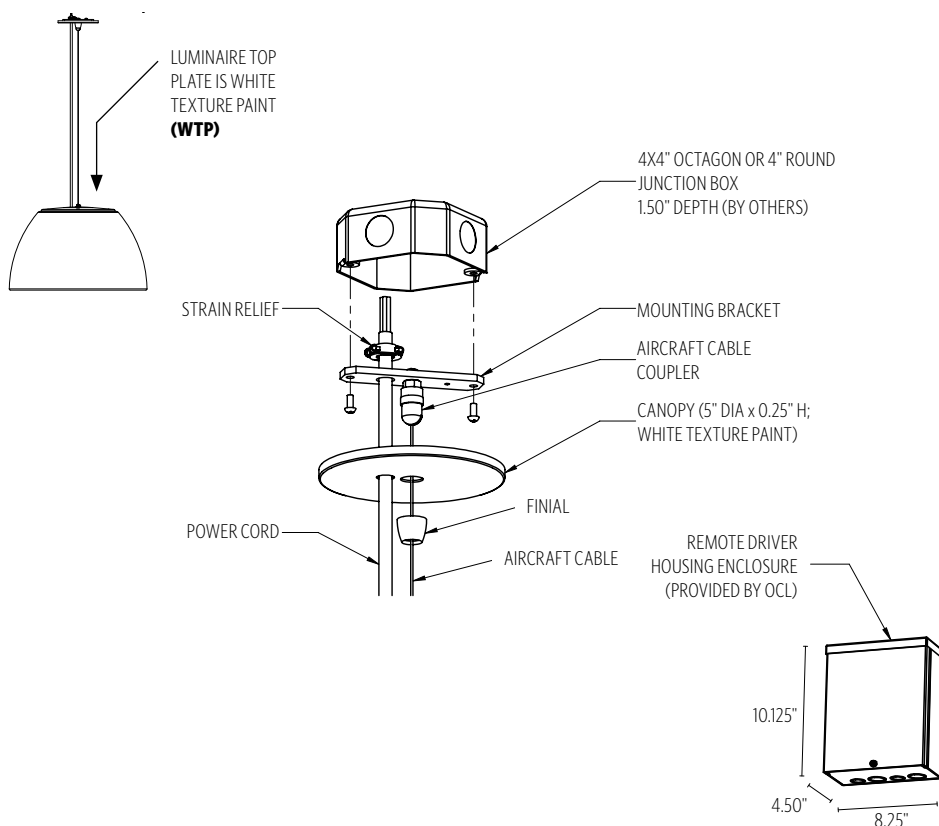


MOUNTING INFORMATION CHART

LUMINAIRE DIAMETER	LUMINAIRE WEIGHT	MIN/MAX OAH
36"	26 LBS	25"/144"

PIFF ships with one of three OAH's (48", 100" or 144") and is field adjustable to the desired height.

PIFG PENDANT WITH 5" FLAT CANOPY, SINGLE CENTER AIRCRAFT CABLE AND POWER CORD; MOUNTS TO 4X4 OCTAGON J-BOX (BY OTHERS); REMOTE DRIVER ENCLOSURE; **NOTE**: REQUIRED FOR **RGBW DMX** CONTROL



MOUNTING INFORMATION CHART

LUMINAIRE DIAMETER	LUMINAIRE WEIGHT	MIN/MAX OAH
18"	6 LBS	16"/144"
24"	12 LBS	19.5"/144"
36"	26 LBS	23"/144"

PIFG ships with one of three OAH's (48", 100" or 144") and is field adjustable to the desired height.

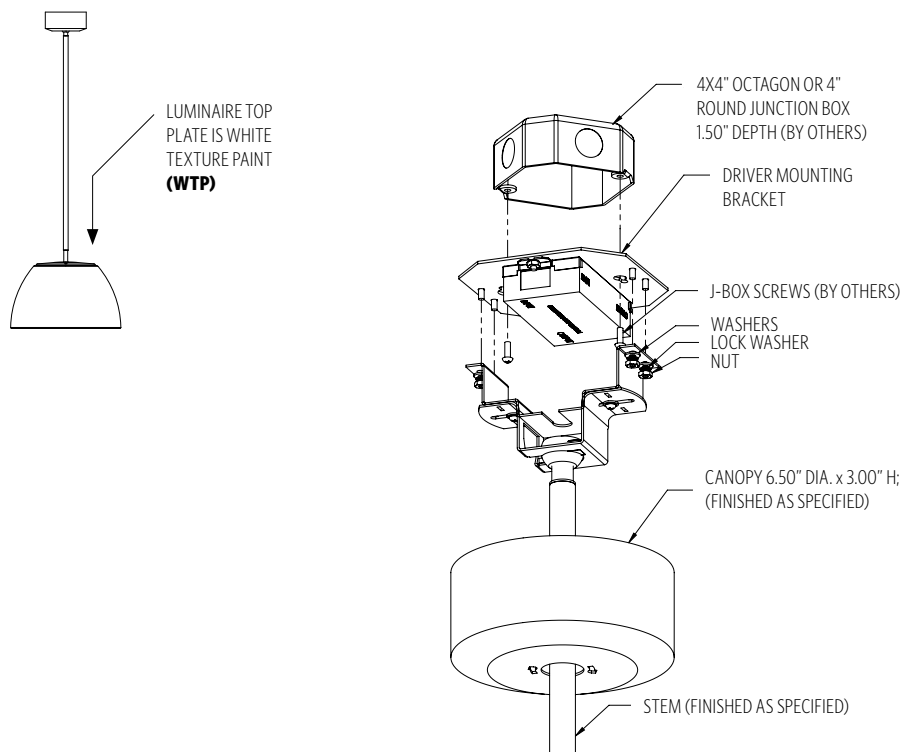
PIFG will include ETL listed enclosure for remote mounting drivers. Max 30' distance from luminaire for **LED1, LED2, & WD2**. For **RGBW** remote box distance, refer to the chart below

MAX WIRE LENGTH FROM RGBW DRIVER REMOTE BOX TO LUMINAIRE

AWG* VALUE	20	10	18	17	16
DISTANCE (m)	14	18	22	28	36
DISTANCE (ft)	46	59	72	92	118

*American Wire Gauge (AWG) is the standard way to denote cross-directional diameter of individual wire in North America. Please observe voltage drops over long wire length. Longer wire lengths increase EMI susceptibility.

PIAA PIAA PENDANT WITH A SINGLE CENTER STEM; MOUNTS TO 4X4 OCTAGON J-BOX (BY OTHERS);
NOTE: 18" AND 24" ONLY



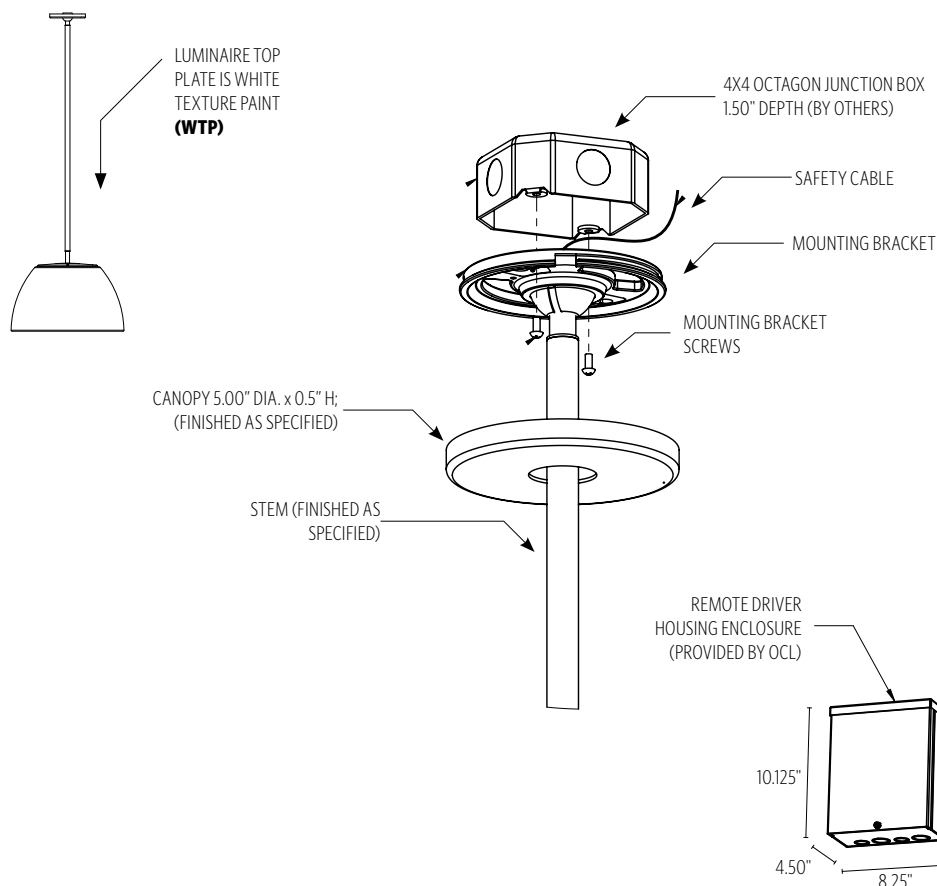
MOUNTING INFORMATION CHART

LUMINAIRE DIAMETER	LUMINAIRE WEIGHT	MIN/MAX OAH
18"	8 LBS	16"/144"
24"	14 LBS	19.5"/144"

Features a 45-degree sloped-ceiling canopy.

PIAA should be specified to the nearest inch.

PIAN PENDANT WITH A SINGLE CENTER STEM; MOUNTS TO 4X4 OCTAGON J-BOX (BY OTHERS);
 REMOTE DRIVER ENCLOSURE; **NOTE:** REQUIRED FOR **RGBW DMX** CONTROL



MOUNTING INFORMATION CHART

LUMINAIRE DIAMETER	LUMINAIRE WEIGHT	MIN/MAX OAH
18"	8 LBS	16"/144"
24"	14 LBS	19.5"/144"
36"	28 LBS	23"/144"

PIAN should be specified to the nearest inch

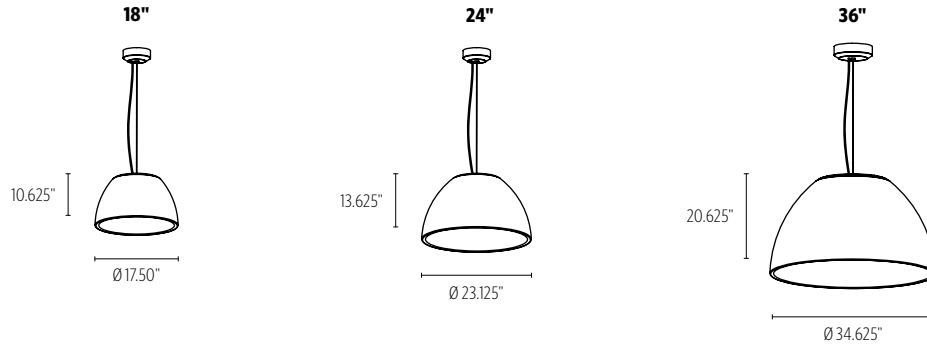
PIAN will include ETL listed enclosure for remote mounting drivers. Max 30' distance from luminaire for **LED1, LED2, & WD2**. For **RGBW** remote box distance, refer to the chart below

MAX WIRE LENGTH FROM RGBW DRIVER REMOTE BOX TO LUMINAIRE

AWG* VALUE	20	10	18	17	16
DISTANCE (m)	14	18	22	28	36
DISTANCE (ft)	46	59	72	92	118

*American Wire Gauge (AWG) is the standard way to denote cross-directional diameter of individual wire in North America. Please observe voltage drops over long wire length. Longer wire lengths increase EMI susceptibility.

SIZES



DIFFUSER



MW MATTE WHITE

FINISH

METALLIC POWDER COAT FINISHES:



SMP
SILVER



GRP
GRAPHITE



SGP
STEEL GRAY



GLP
GOLDTASTIC



BMP
BRASS



BNP
BRONZE

PREMIUM METAL FINISHES:



BAL
BRUSHED
ALUMINUM

SOLID POWDER COAT FINISHES:



SWP
SKY WHITE



MWP
MATTE
WHITE



BKP
BLACK

TEXTURED POWDER COAT FINISHES:



BTP
BLACK
TEXTURED



WTP
WHITE
TEXTURED

RAL®, Pantone® or custom finishes are also available.

These colors are for reference only. Please be aware that colors may vary per monitor. Contact your local rep for finish samples or with any questions.

LIGHT SOURCE

LUMENS AND WATTAGE CHART		18"	24"	36"
LED1	LUMENS DELIVERED	1890	3050	6350
	SYSTEM WATTAGE	18	30	58
LED2	LUMENS DELIVERED	3320	5230	9850
	SYSTEM WATTAGE	30	50	90
WD1	PENDING PHOTOMETRIC TESTING			

This chart was created for a 35K color temp. Multiply by 0.95 for 27k color temp, 0.97 for 30k color temp, and 1.03 for 40k color temp. Values shown for 80+ CRI. For 90+ CRI lumens use 0.85 multiplier.

STANDARD COLOR TEMPERATURE OPTIONS	CRI	
2700K	80+	90+
3000K	80+	90+
3500K	80+	90+
4000K	80+	90+
3000K-1800K (WD1)	90+	

For 80+ CRI - 80 RA, R9 > 0 (10-15 TYP.); For 90+ CRI - 90 RA, R9 > 50

ZONE	LUMENS	% OF LUMINAIRE
0-30	190	10%
0-60	627	33%
0-90	1075	57%
90-180	823	43%
0-180	1898	100%

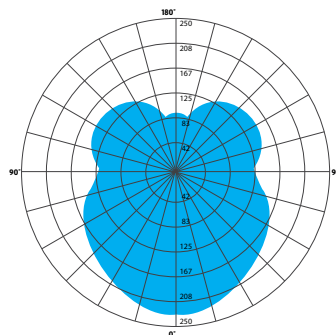
This chart was created using NEI-XXX-18-LED1/35K testing data, and will vary with size & light source specifications chosen. See IES files on product page.

PHOTOMETRY:

LUMINAIRE: NEI-PIXX-18-MW-PTD-LED1-35K-UNV-XX-DM1
 COLOR TEMP #: 3500K
 OUTPUT: 1898
 EFFICACY: UP TO 111 LM/W
 TEST REPORT: TEST NO. 105083407CRT-001

UGR VALUE CHART	18"	24"	36"
LED1	12.7	11.7	11.3
LED2	14.7	13.6	12.9

Luminaire UGR values are for reference only. UGR is a tool for designers to evaluate a complete space. It is not a check box, or an inherent characteristic of any individual luminaire.



ABOUT WARM DIM

Warm Dim (WD1) when used with DM1 control option closely mimics the CCT curve of halogen bulb as it dims, transitioning on a logarithmic curve from 3000K at full output to 1800K at minimum output

LUMEN MAINTENANCE - 18" & 24" (STATIC WHITE ONLY)

REPORTED: L70 AT >60,000 HRS
 CALCULATED: L70 AT 115,000 HRS
 REPORTED: L90 AT 34,000 HRS
 CALCULATED: L90 AT 34,000 HRS

LUMEN MAINTENANCE - 36" (STATIC WHITE ONLY)

REPORTED: L70 AT >60,000 HRS
 CALCULATED: L70 AT 124,000 HRS
 REPORTED: L90 AT 37,000 HRS
 CALCULATED: L90 AT 37,000 HRS

Derived from EPA TM-21 calculator. Based on typical conditions. Consult the factory for additional details.

CONTROL

DM1 0-10V DIMMING 1%

- 0-10V DIMMING
- 1% MINIMUM DIM LEVEL
- ELECTRONIC DRIVER
- POWER FACTOR >0.9
- THD <20%
- MINIMUM AMBIENT OPERATING TEMPERATURE -31°F
- FIELD REPLACEABLE
- LINEAR DIMMING CURVE
- DIM TO OFF

DMX DMX CONTROL DIMMABLE TO 0.1%

- DMX 512A/RDM DIMMING PROTOCOL
- 0.1% MINIMUM DIM LEVEL
- ELECTRONIC DRIVER
- POWER FACTOR >0.9
- THD <20%
- MINIMUM AMBIENT OPERATING TEMPERATURE -4°F
- LOGARITHMIC DIMMING CURVE [DEFAULT]
- FIELD REPLACEABLE

OPTIONS

ULD DAMP LABEL LUMINAIRE

- MAY BE USED IN A OUTDOOR AREA THAT IS PROTECTED FROM DIRECT CONTACT WITH WIND, RAIN, SNOW OR EXCESSIVE MOISTURE

MOD MODIFIED LUMINAIRE

- LUMINAIRE IS MODIFIED FROM STANDARD OPTIONS. CONTACT LOCAL REP FOR MORE INFORMATION

SPECIFICATIONS

CONSTRUCTION

- DIFFUSER IS MOLDED IN ONE PIECE WITHOUT VISIBLE SEAMS OR JOINTS; **IK10** IMPACT RATED
- CAST ALUMINUM TOP PLATE WITH WHITE TEXTURE PAINT (**WTP**) FINISH
- HANGING SYSTEMS USE STEEL OR ALUMINUM CANOPIES WITH AIRCRAFT CABLE SUPPORTS; OR HARD STEMS
- HARDWARE IS STEEL OR STAINLESS STEEL

MOUNTING

- **P1FK, P1FF, P1AA, P1FG & P1AN** MOUNT TO 4X4" OCTAGON OR 4" ROUND J-BOX (BY OTHER)
- **P1FB** MOUNTS TO OCL PROPRIETARY RECESSED J-BOX (PROVIDED BY OCL)

ELECTRICAL

- DIMMING ELECTRONIC DRIVER, COMES STANDARD WITH 0-10V DOWN TO 1%
- OCL PROPRIETARY LED ARRAYS USE NICHIA 757 DIODES
- **FOR INTEGRAL DRIVERS:** LUMINAIRE CONNECTS TO BUILDING SUPPLY (120V-277V 50/60HZ)
- **FOR REMOTE DRIVERS:** LUMINAIRE WIRE LEADS ARE LOW-VOLTAGE. THE WIRES SHOULD BE CONNECTED TO OCL PROVIDED REMOTE DRIVER ENCLOSURE ONLY!

LISTING

- ETL LISTED TO UL 1598 FOR DRY LOCATIONS, DAMP LOCATION (**ULD**) LISTED IS OPTION

WARRANTY

- 5 YEAR; ALL ELECTRICAL COMPONENTS RETAIN THE MANUFACTURER'S WARRANTY

SUSTAINABILITY

- SURFACE LUMINANCE OF < 1600 CD/M² - CAN CONTRIBUTE TO **WELL** AND **LEED** SPECIFICATIONS
- THIS PRODUCT MEETS THE MATERIAL RESTRICTIONS OF ARTICLE 4 OF THE **ROHS** DIRECTIVE (2011/65/EU), INCLUDING COMMISSION DELEGATED DIRECTIVE 2015/863

SAFETY REGULATIONS

- CAN BE USED FOR **TITLE 24 PART 6** AND **JA8-2016E** COMPLIANCE — CONTACT YOUR REP FOR HELP WITH YOUR PROJECT REQUIREMENTS AND LUMINAIRE SPECIFICATION

COMMON MODIFICATIONS

WE'RE BUILT FOR OUT-OF-THE-BOX THINKERS.

Nearly 50% of OCL fixtures we manufacture have some type of modification. Here is a list of common modifications we frequently produce. **Please contact the factory for modifications specific to your fixture or project.**

Need some help? Simply send your questions to us at OCL-Quotes@ocl.com

- BIOS, TUNABLE WHITE, WARM-DIM, & RGBW LIGHT SOURCES
- SPECIFIC LUMEN OUTPUT
- MODIFIED CLUSTERS OR CONFIGURATIONS / MULTI-DROP CANOPIES
- VARIOUS SHAPES, ARCS, AND CURVES FOR LINEAR PROFILES AND RINGS
- CEILING OR SURFACE MOUNTING
- LARGE SCALE MODIFICATIONS
- RAL, PANTONE, BRAND-SPECIFIC, RETIRED OCL COLOR, OR CUSTOM FINISHES



- EMERGENCY BATTERY BACKUP OR INVERTER OPTIONS
- REMOTE DRIVERS / EXTENDED DISTANCE REMOTE DRIVERS
- DIMMING TO 0.1% (DIM TO DARK)
- NON-STANDARD SIZES OR LENGTHS
- NON-STANDARD CANOPY, BODY AND/OR CORD COLORS
- SEISMIC AND/OR ANTI-SWAY SYSTEMS
- RIGID STEMS
- MODIFIED OVERALL HEIGHTS (LONGER OR SHORTER OAH)
- UPLIGHT ADDITIONS
- LASER ETCHING, ENGRAVING, AND CUTOUTS