



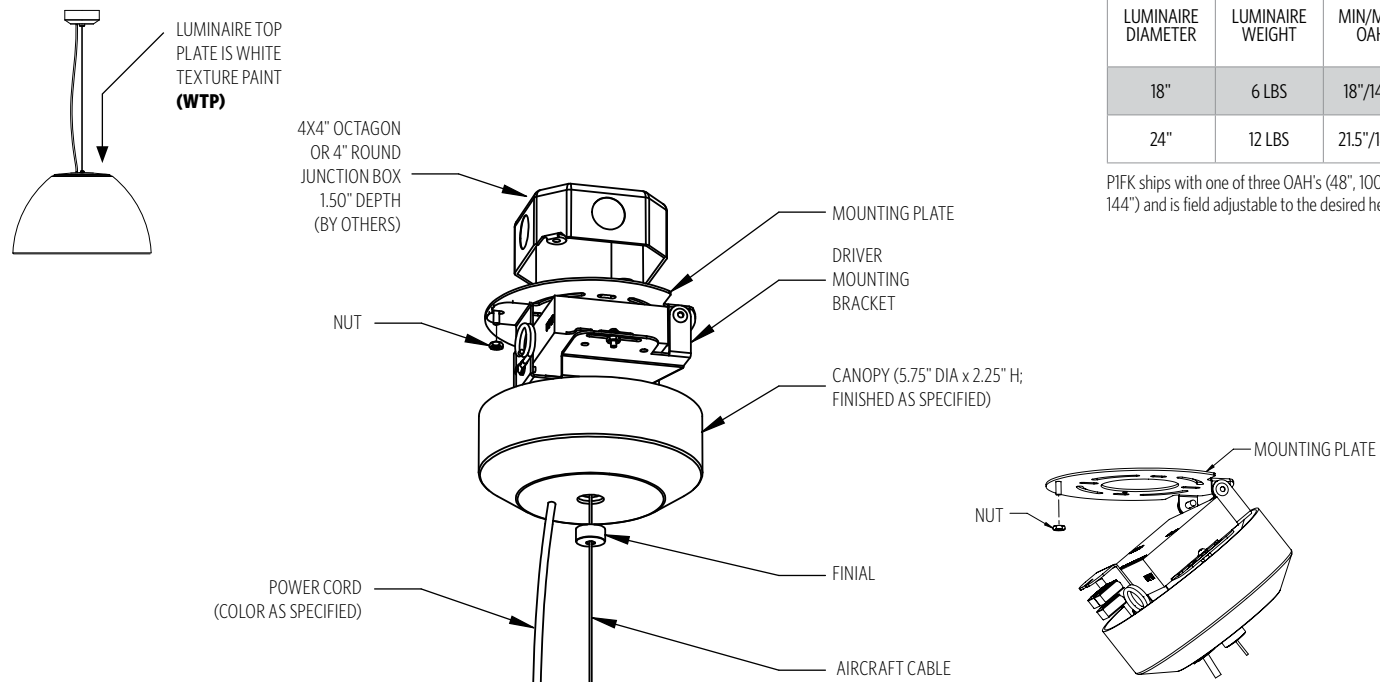
# HANGING SYSTEM

**P1FK** PENDANT WITH 5.75" SURFACE MOUNT CANOPY, SINGLE CENTER AIRCRAFT CABLE AND POWER CORD; MOUNTS TO 4X4 OCTAGON J-BOX (BY OTHERS); INTEGRAL DRIVERS; **NOTE: 18" AND 24" ONLY**

## MOUNTING INFORMATION CHART

LUMINAIRE DIAMETER	LUMINAIRE WEIGHT	MIN/MAX OAH
18"	6 LBS	18"/144"
24"	12 LBS	21.5"/144"

P1FK ships with one of three OAH's (48", 100" or 144") and is field adjustable to the desired height.

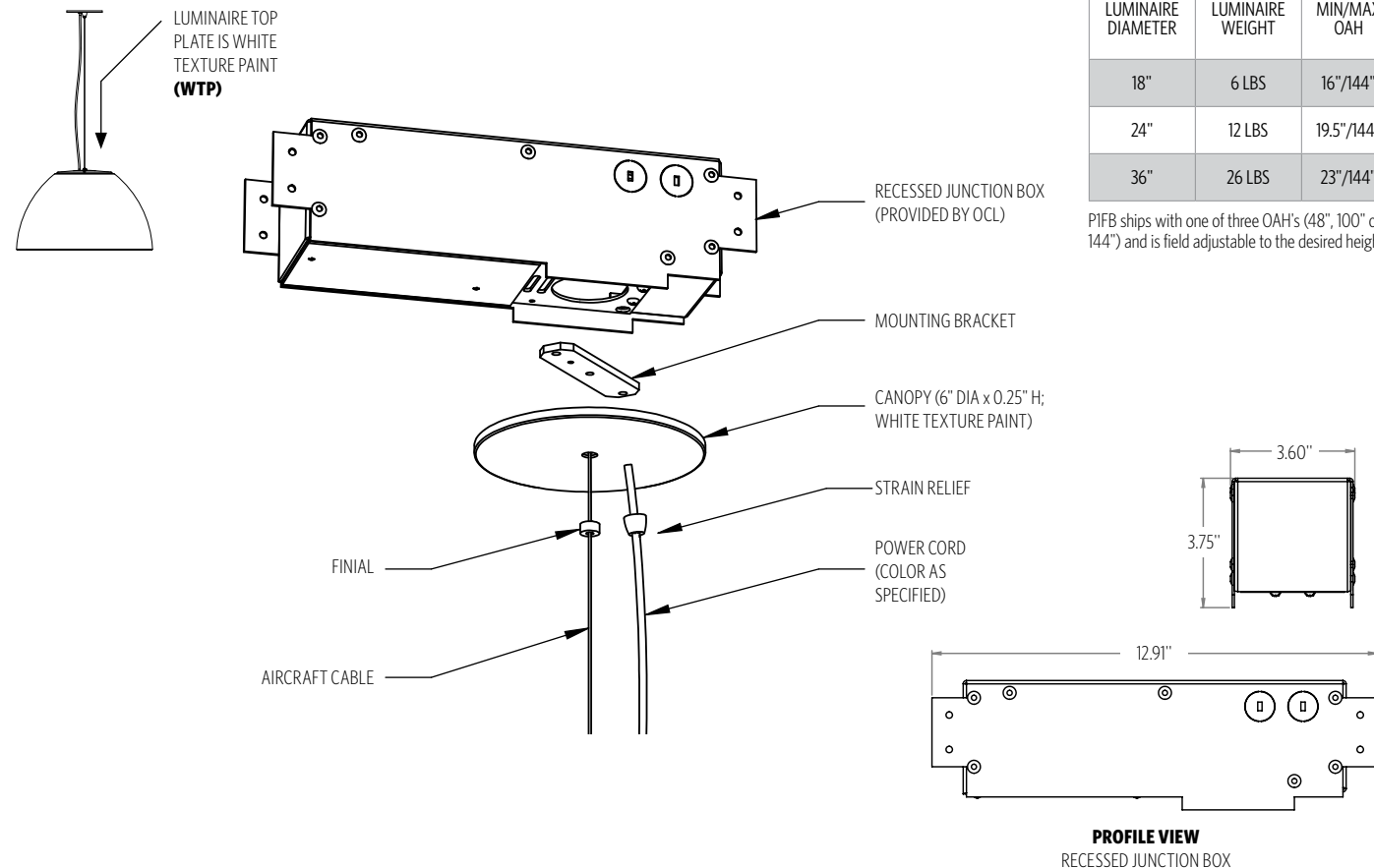


**P1FB** PENDANT WITH FLAT CANOPY, SINGLE CENTER AIRCRAFT CABLE AND POWER CORD; MOUNTS TO OCL RECESSED J-BOX (PROVIDED BY OCL)

## MOUNTING INFORMATION CHART

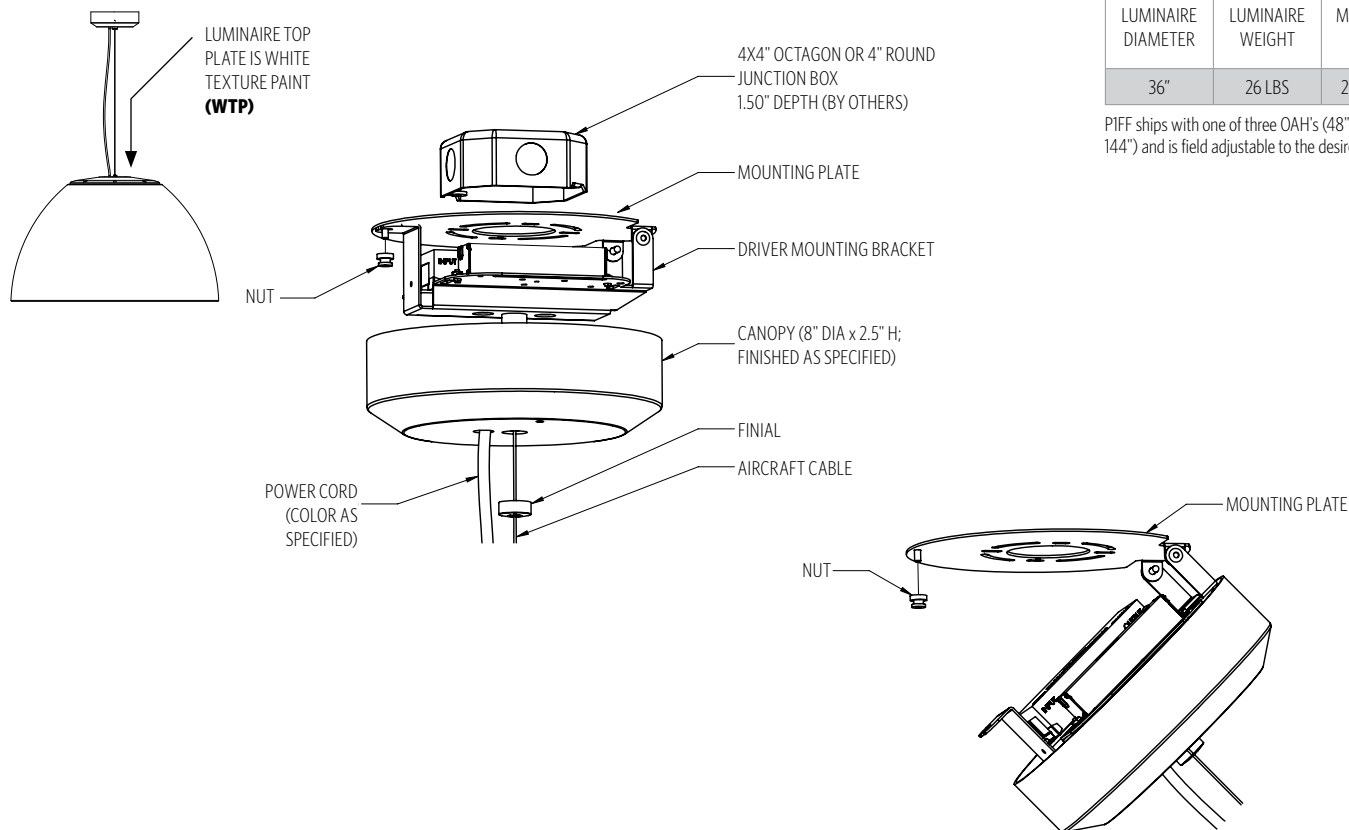
LUMINAIRE DIAMETER	LUMINAIRE WEIGHT	MIN/MAX OAH
18"	6 LBS	16"/144"
24"	12 LBS	19.5"/144"
36"	26 LBS	23"/144"

P1FB ships with one of three OAH's (48", 100" or 144") and is field adjustable to the desired height.



**PROFILE VIEW**  
RECESSED JUNCTION BOX

**PIFF** PENDANT WITH 8" SURFACE MOUNT CANOPY, SINGLE CENTER AIRCRAFT CABLE AND POWER CORD; MOUNTS TO 4X4 OCTAGON J-BOX (BY OTHERS); INTEGRAL DRIVERS; (**NOTE** 36" ONLY)

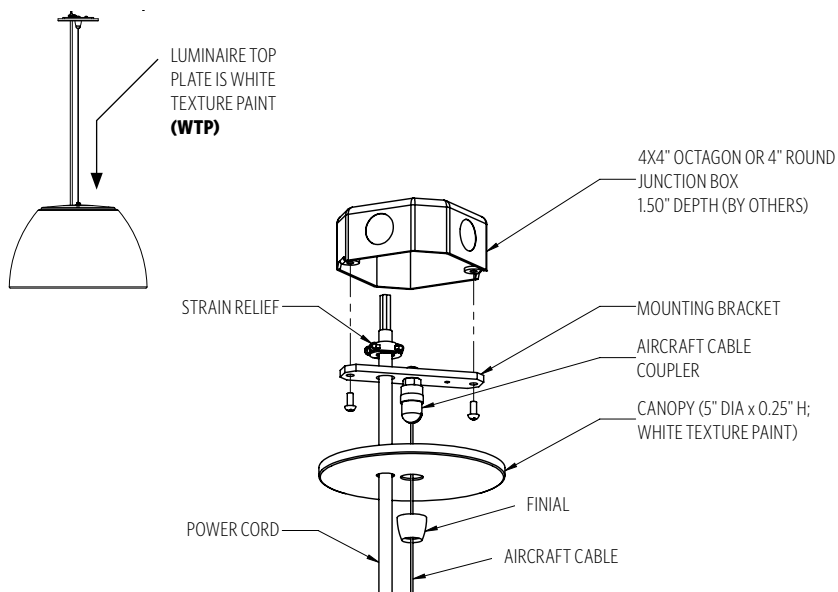


#### MOUNTING INFORMATION CHART

LUMINAIRE DIAMETER	LUMINAIRE WEIGHT	MIN/MAX OAH
36"	26 LBS	25"/144"

PIFF ships with one of three OAH's (48", 100" or 144") and is field adjustable to the desired height.

**PIFG** PENDANT WITH 5" FLAT CANOPY, SINGLE CENTER AIRCRAFT CABLE AND POWER CORD; MOUNTS TO 4X4 OCTAGON J-BOX (BY OTHERS); REMOTE DRIVER ENCLOSURE



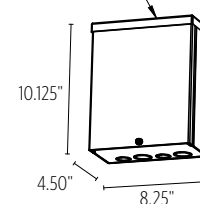
#### MOUNTING INFORMATION CHART

LUMINAIRE DIAMETER	LUMINAIRE WEIGHT	MIN/MAX OAH
18"	6 LBS	16"/144"
24"	12 LBS	19.5"/144"
36"	26 LBS	23"/144"

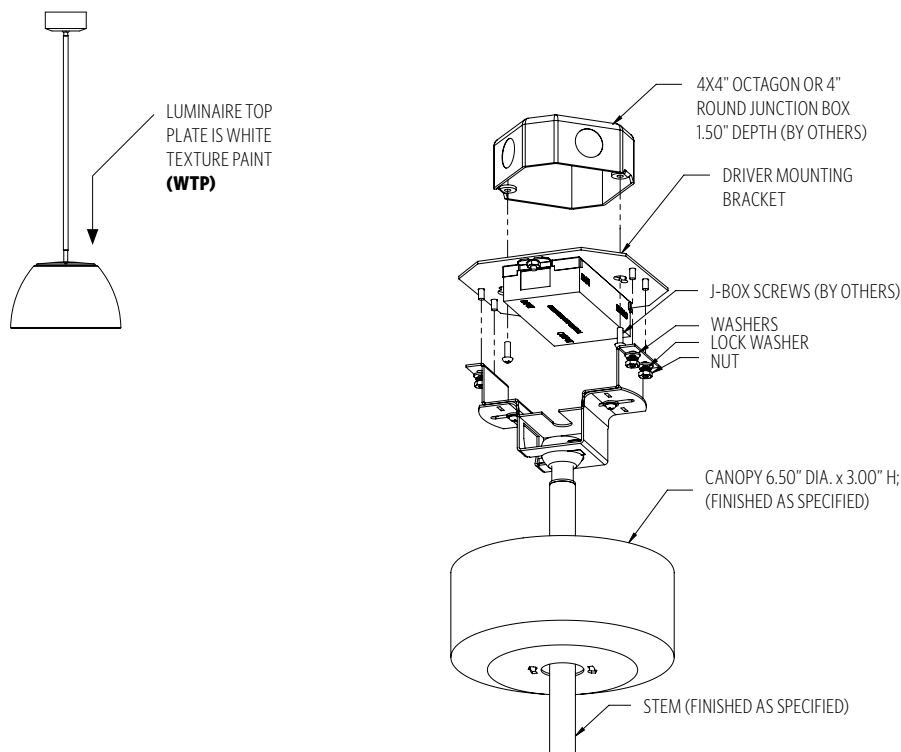
**PIFG** ships with one of three OAH's (48", 100" or 144") and is field adjustable to the desired height.

**PIFG** will include ETL listed enclosure for remote mounting drivers. Max 30' distance from luminaire for **LED1**, & **LED2**.

REMOTE DRIVER HOUSING ENCLOSURE (PROVIDED BY OCL)



**PIAA** PIAA PENDANT WITH A SINGLE CENTER STEM; MOUNTS TO 4X4 OCTAGON J-BOX (BY OTHERS);  
**NOTE:** 18" AND 24" ONLY



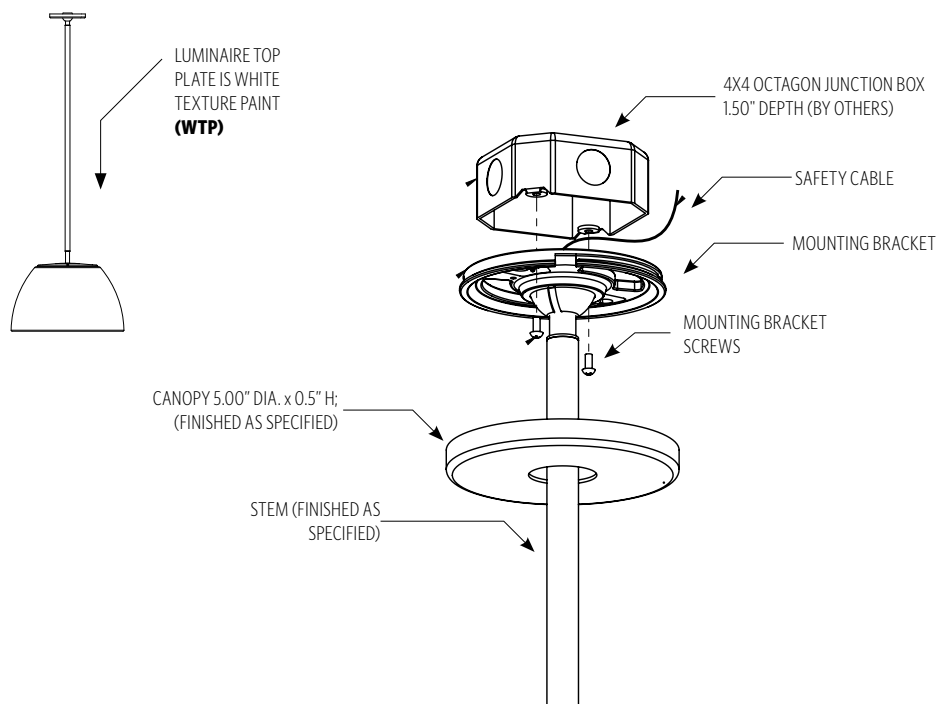
#### MOUNTING INFORMATION CHART

LUMINAIRE DIAMETER	LUMINAIRE WEIGHT	MIN/MAX OAH
18"	8 LBS	16"/144"
24"	14 LBS	19.5"/144"

Features a 45-degree sloped-ceiling canopy.

**PIAA** should be specified to the nearest inch.

**PIAN** PENDANT WITH A SINGLE CENTER STEM; MOUNTS TO 4X4 OCTAGON J-BOX (BY OTHERS);  
 REMOTE DRIVER ENCLOSURE



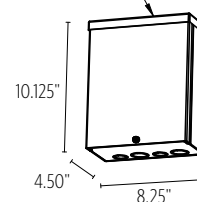
#### MOUNTING INFORMATION CHART

LUMINAIRE DIAMETER	LUMINAIRE WEIGHT	MIN/MAX OAH
18"	8 LBS	16"/144"
24"	14 LBS	19.5"/144"
36"	28 LBS	23"/144"

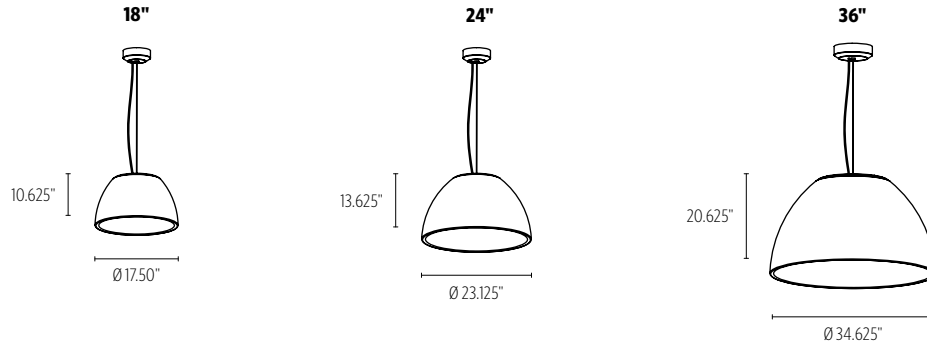
**PIAN** should be specified to the nearest inch

**PIAN** will include ETL listed enclosure for remote mounting drivers. Max 30' distance from luminaire for **LED1**, & **LED2**.

REMOTE DRIVER HOUSING ENCLOSURE (PROVIDED BY OCL)



## SIZES



## DIFFUSER



**MW** MATTE WHITE

## FINISH

### METALLIC POWDER COAT FINISHES:



**SMP**  
SILVER



**GRP**  
GRAPHITE



**SGP**  
STEEL GRAY



**GLP**  
GOLDTASTIC



**BMP**  
BRASS



**BNP**  
BRONZE

### PREMIUM METAL FINISHES:



**BAL**  
BRUSHED  
ALUMINUM

### SOLID POWDER COAT FINISHES:



**SWP**  
SKY WHITE



**MWP**  
MATTE  
WHITE



**BKP**  
BLACK

### TEXTURED POWDER COAT FINISHES:



**BTP**  
BLACK  
TEXTURED



**WTP**  
WHITE  
TEXTURED

**RAL®, Pantone® or custom finishes are also available.**

These colors are for reference only. Please be aware that colors may vary per monitor. Contact your local rep for finish samples or with any questions.

## LIGHT SOURCE

LUMENS AND WATTAGE CHART		18"	24"	36"
<b>LED1</b>	LUMENS DELIVERED	1890	3050	6350
	SYSTEM WATTAGE	18	30	58
<b>LED2</b>	LUMENS DELIVERED	3320	5230	9850
	SYSTEM WATTAGE	30	50	90

This chart was created for a 35K color temp. Multiply by 0.95 for 27k color temp, 0.97 for 30k color temp, and 1.03 for 40k color temp. Values shown for 80+ CRI. For 90+ CRI lumens use 0.85 multiplier.

STANDARD COLOR TEMPERATURE OPTIONS	CRI	
2700K	80+	90+
3000K	80+	90+
3500K	80+	90+
4000K	80+	90+

For 80+ CRI - 80 RA, R9 > 0 (10-15 TYP.); For 90+ CRI - 90 RA, R9 > 50

ZONE	LUMENS	% OF LUMINAIRE
0-30	190	10%
0-60	627	33%
0-90	1075	57%
90-180	823	43%
0-180	1898	100%

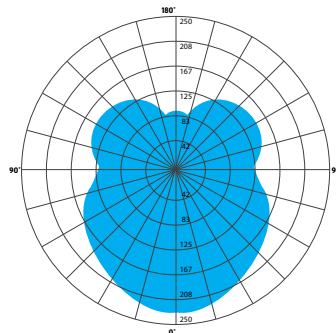
This chart was created using NEI-XXX-18-LED1/35K testing data, and will vary with size & light source specifications chosen. See IES files on product page.

### PHOTOMETRY:

LUMINAIRE: NEI-PIXX-18-MW-PTD-LED1-35K-UNV-XX-DM1  
 COLOR TEMP #: 3500K  
 OUTPUT: 1898  
 EFFICACY: UP TO 111 LM/W  
 TEST REPORT: TEST NO. 105083407CRT-001

UGR VALUE CHART	18"	24"	36"
<b>LED1</b>	12.7	11.7	11.3
<b>LED2</b>	14.7	13.6	12.9

Luminaire UGR values are for reference only. UGR is a tool for designers to evaluate a complete space. It is not a check box, or an inherent characteristic of any individual luminaire.



### LUMEN MAINTENANCE - 18" & 24"

REPORTED: L70 AT >60,000 HRS  
 CALCULATED: L70 AT 115,000 HRS  
 REPORTED: L90 AT 34,000 HRS  
 CALCULATED: L90 AT 34,000 HRS

### LUMEN MAINTENANCE - 36"

REPORTED: L70 AT >60,000 HRS  
 CALCULATED: L70 AT 124,000 HRS  
 REPORTED: L90 AT 37,000 HRS  
 CALCULATED: L90 AT 37,000 HRS

Derived from EPA TM-21 calculator. Based on typical conditions. Consult the factory for additional details.

## CONTROL

### DM1 0-10V DIMMING 1%

- 0-10V DIMMING
- 1% MINIMUM DIM LEVEL
- ELECTRONIC DRIVER
- POWER FACTOR >0.9
- THD <20%
- MINIMUM AMBIENT OPERATING TEMPERATURE -31°F
- FIELD REPLACEABLE
- LINEAR DIMMING CURVE
- DIM TO OFF

## OPTIONS

### ULD DAMP LABEL LUMINAIRE

- MAY BE USED IN A OUTDOOR AREA THAT IS PROTECTED FROM DIRECT CONTACT WITH WIND, RAIN, SNOW OR EXCESSIVE MOISTURE

### MOD MODIFIED LUMINAIRE

- LUMINAIRE IS MODIFIED FROM STANDARD OPTIONS. CONTACT LOCAL REP FOR MORE INFORMATION

## SPECIFICATIONS

### CONSTRUCTION

- DIFFUSER IS MOLDED IN ONE PIECE WITHOUT VISIBLE SEAMS OR JOINTS; **IK10** IMPACT RATED
- CAST ALUMINUM TOP PLATE WITH WHITE TEXTURE PAINT (**WTP**) FINISH
- HANGING SYSTEMS USE STEEL OR ALUMINUM CANOPIES WITH AIRCRAFT CABLE SUPPORTS; OR HARD STEMS
- HARDWARE IS STEEL OR STAINLESS STEEL

### MOUNTING

- **P1FK, P1FF, P1AA, P1FG & P1AN** MOUNT TO 4X4" OCTAGON OR 4" ROUND J-BOX (BY OTHER)
- **P1FB** MOUNTS TO OCL PROPRIETARY RECESSED J-BOX (PROVIDED BY OCL)

### ELECTRICAL

- DIMMING ELECTRONIC DRIVER, COMES STANDARD WITH 0-10V DOWN TO 1%
- OCL PROPRIETARY LED ARRAYS USE NICHIA 757 DIODES
- **FOR INTEGRAL DRIVERS:** LUMINAIRE CONNECTS TO BUILDING SUPPLY (120V-277V 50/60HZ)
- **FOR REMOTE DRIVERS:** LUMINAIRE WIRE LEADS ARE LOW-VOLTAGE. THE WIRES SHOULD BE CONNECTED TO OCL PROVIDED REMOTE DRIVER ENCLOSURE ONLY!

### LISTING

- ETL LISTED TO UL 1598 FOR DRY LOCATIONS, DAMP LOCATION (**ULD**) LISTED IS OPTION

### WARRANTY

- 5 YEAR; ALL ELECTRICAL COMPONENTS RETAIN THE MANUFACTURER'S WARRANTY

### BUILD AMERICA, BUY AMERICA (BABA)

- THIS PRODUCT MEETS THE GUIDELINES FOR THE BUILD AMERICA, BUY AMERICA ACT. **SOME EXCLUSIONS APPLY.** FOR MORE INFORMATION AND A FULL LIST OF ELIGIBLE SKUS, VISIT **OCL.COM/BABA**

### SUSTAINABILITY

- SURFACE LUMINANCE OF < 1600 CD M/2 - CAN CONTRIBUTE TO **WELL** AND **LEED** SPECIFICATIONS
- THIS PRODUCT MEETS THE MATERIAL RESTRICTIONS OF ARTICLE 4 OF THE **ROHS** DIRECTIVE (2011/65/EU), INCLUDING COMMISSION DELEGATED DIRECTIVE 2015/863

### SAFETY REGULATIONS

- CAN BE USED FOR **TITLE 24 PART 6** AND **JA8-2016E** COMPLIANCE — CONTACT YOUR REP FOR HELP WITH YOUR PROJECT REQUIREMENTS AND LUMINAIRE SPECIFICATION

## COMMON MODIFICATIONS

### WE'RE BUILT FOR OUT-OF-THE-BOX THINKERS.

Nearly 50% of OCL fixtures we manufacture have some type of modification. Here is a list of common modifications we frequently produce. **Please contact the factory for modifications specific to your fixture or project.**

Need some help? Simply send your questions to us at **OCL-Quotes@ocl.com**

- BIOS, TUNABLE WHITE, WARM-DIM, & RGBW LIGHT SOURCES
- SPECIFIC LUMEN OUTPUT
- MODIFIED CLUSTERS OR CONFIGURATIONS / MULTI-DROP CANOPIES
- VARIOUS SHAPES, ARCS, AND CURVES FOR LINEAR PROFILES AND RINGS
- CEILING OR SURFACE MOUNTING
- LARGE SCALE MODIFICATIONS
- RAL, PANTONE, BRAND-SPECIFIC, RETIRED OCL COLOR, OR CUSTOM FINISHES



- EMERGENCY BATTERY BACKUP OR INVERTER OPTIONS
- REMOTE DRIVERS / EXTENDED DISTANCE REMOTE DRIVERS
- DIMMING TO 0.1% (DIM TO DARK)
- NON-STANDARD SIZES OR LENGTHS
- NON-STANDARD CANOPY, BODY AND/OR CORD COLORS
- SEISMIC AND/OR ANTI-SWAY SYSTEMS
- RIGID STEMS
- MODIFIED OVERALL HEIGHTS (LONGER OR SHORTER OAH)
- UPLIGHT ADDITIONS
- LASER ETCHING, ENGRAVING, AND CUTOUTS