



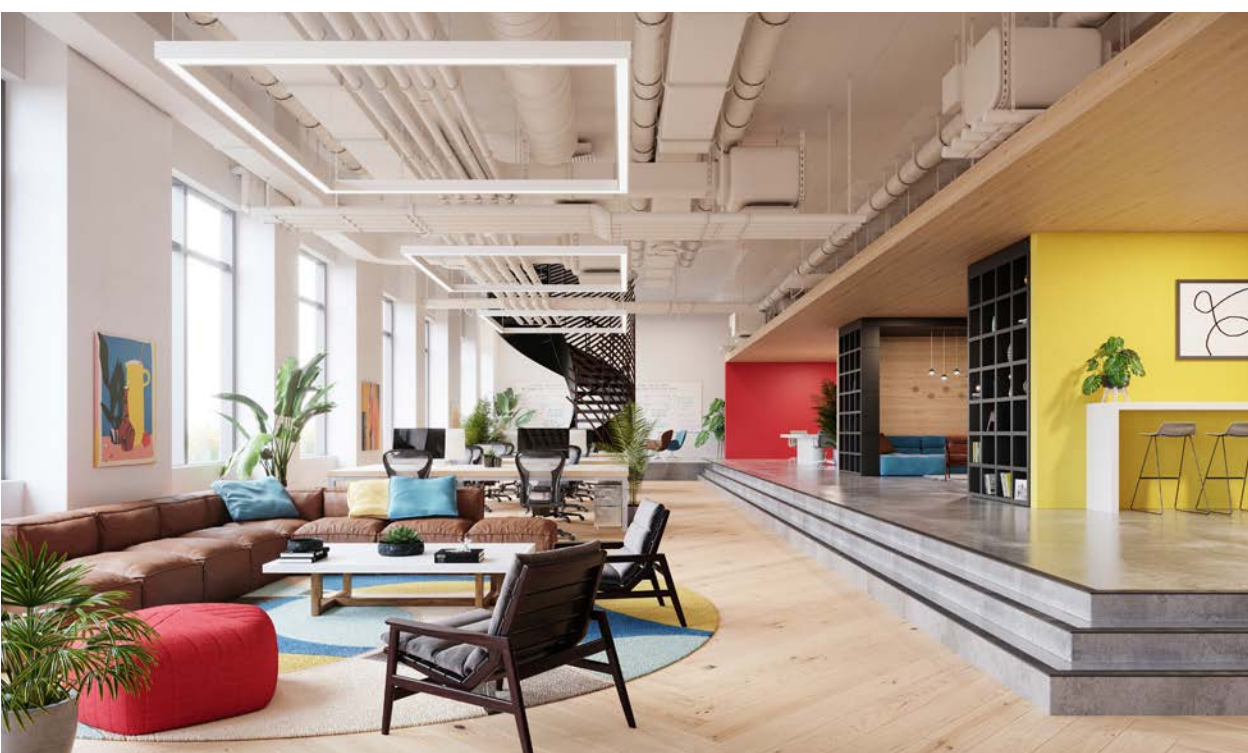
## KWYET™

COMBINATION OF TUBE LUMINAIRE AND SOUND ABSORBING 12MM ACOUSTIC FINS / AVAILABLE IN TUNABLE WHITE / 36" DIAMETER WITH CONE, ANGLE, AND ELLIPSE SHAPES / OPTIONAL DOWNLIGHT / EXTRUDED ACRYLIC DIFFUSER / DIE-CAST ALUMINUM END CAPS / ACOUSTIC FELT CONTAINS MINIMUM 75% RECYCLED PLASTIC BOTTLE FLAKE / CUSTOM SIZES, SHAPES, CLUSTERS, AND CONFIGURATIONS POSSIBLE



## GLOWING ACOUSTIC™

AVAILABLE WITH 12MM PET FELT ACOUSTIC PANEL / 4" X 4" PROFILE AND 24", 36", 48", 60" AND 72" DIAMETERS / SEAMLESS ONE PIECE MOLDED DIFFUSER / FULLY ENCLOSED TOP SURFACE TO MINIMIZE DUST AND DEBRIS ACCUMULATION / ACOUSTIC FELT CONTAINS MINIMUM 75% RECYCLED PLASTIC BOTTLE FLAKE / PERFORMANCE DIFFUSER ALLOWS HIGH TRANSMISSION, ZERO LED IMAGING AND LOW GLARE



## STEALTH™

AVAILABLE IN TUNABLE WHITE / OPTIONAL 12MM PET FELT ACOUSTIC PANEL / 1.75" X 1.75" SQUARE PROFILE / 24", 36", 48", 60", & 72" SIZES / EXTRUDED SILICONE DIFFUSER / EXTRUDED ALUMINUM BODY / FULLY WELDED CORNERS / ACOUSTIC FELT CONTAINS MINIMUM 75% RECYCLED PLASTIC BOTTLE FLAKE / CUSTOM SIZES, SHAPES, CLUSTERS, AND CONFIGURATIONS POSSIBLE



## REV™

AVAILABLE IN TUNABLE WHITE / OPTIONAL 12MM PET FELT ACOUSTIC PANEL / 1.75" X 1.75" SQUARE PROFILE / 24", 36", 48", 60", & 72" DIAMETERS / EXTRUDED SILICONE DIFFUSER / EXTRUDED ALUMINUM BODY / FULLY WELDED SEAMS / ACOUSTIC FELT CONTAINS MINIMUM 75% RECYCLED PLASTIC BOTTLE FLAKE / CUSTOM SIZES, SHAPES, CLUSTERS, AND CONFIGURATIONS POSSIBLE



## LINER™

AVAILABLE IN TUNABLE WHITE / 1.75" X 1.75" SQUARE PROFILE / SIMPLE, LINEAR FIXTURE CAN BE CONNECTED TO CREATE LONG, CONTINUOUS LINES OF LIGHT / EXTRUDED SILICONE DIFFUSER / EXTRUDED ALUMINUM BODY / CUSTOM SIZES, SHAPES, AND CONFIGURATIONS POSSIBLE





1. GLOWBALL
2. TUBIE
3. NOVA
4. KWYET
5. REV
6. STEALTH
7. LINER
8. GLOWRING ACOUSTIC

TUNABLE WHITE  
RGBW  
ACOUSTIC SOLUTIONS

*tune in*  
*no one*


OCL ARCHITECTURAL LIGHTING // NEW OBJECTS 2019




NOVA™


18", 24", AND 36" DIAMETERS / ALUMINUM OUTER SHADES WITH OPTIONAL TWO-TONE FINISH / DIE-CAST ALUMINUM BODY / REGRESSED PERFORMANCE DIFFUSER ALLOWS HIGH TRANSMISSION AND ZERO LED IMAGING


GLOWBALL™


AVAILABLE IN TUNABLE WHITE OR RGBW / 4.5" DIAMETER SPHERE / DIE-CAST ALUMINUM BODY / INJECTION-MOLDED SILICONE DIFFUSER / CUSTOM CLUSTERS AND CONFIGURATIONS POSSIBLE



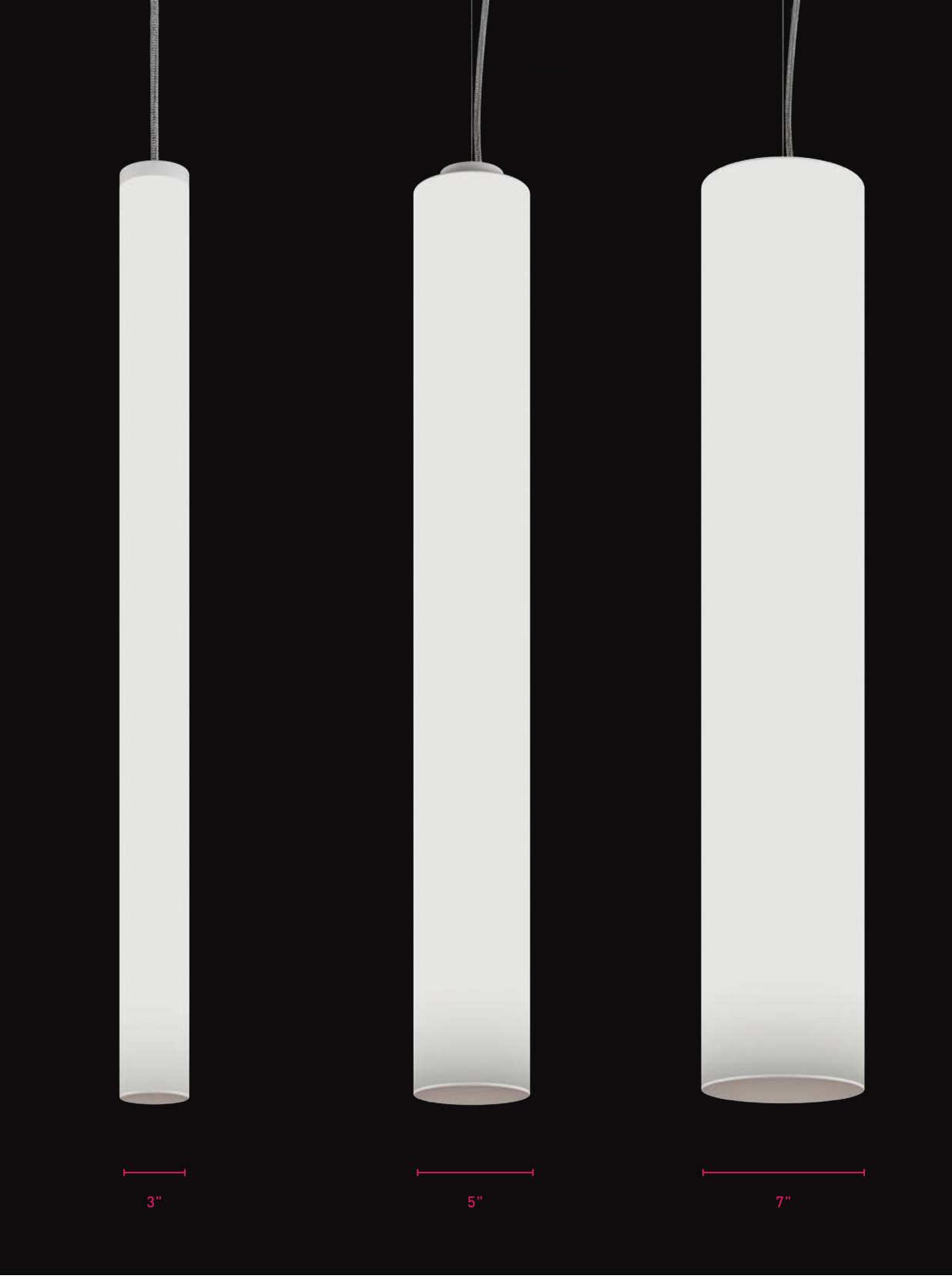
11902 Lackland Road St. Louis, Missouri 63146 P 314.863.1895 F 314.863.3278  
[Detailed specification information available at OCL.COM](#)


MADE IN USA  
OCL ©2019  
ALL RIGHTS RESERVED


OCL  
ARCHITECTURAL LIGHTING

A brand of 






3" 5" 7"

TUBIE™

AVAILABLE IN TUNABLE WHITE / 3", 5", AND 7" DIAMETERS / 12", 24", 36", 48", 60", 72", & 96" LENGTHS / OPTIONAL DOWNLIGHT / EXTRUDED ACRYLIC DIFFUSER / DIE-CAST ALUMINUM END CAPS / CUSTOM LENGTHS, CLUSTERS, AND CONFIGURATIONS POSSIBLE / 135+ LUMENS PER WATT DELIVERED


DOWNLIGHT  
OPTION

