

INSTALLATION INSTRUCTIONS ILLUSION SCONCE S1SA HANGING SYSTEM

These instructions cover the ILLUSION luminaire with the following options:

SERIES	HANGING SYSTEM	BODY SIZE	BODYLIGHT SOURCE	LED OUTPUT	CONTROL	WIRING INFORMATION
1. IL1 (ILLUSION)	S1SA: INDOOR ADA COMPLIANT SCONCE	24"	STATIC WHITE	LED1 & LED2	DM1 (0-10V DIMMING 1%)	SEE PAGE 6 FOR WIRE CONNECTION INFORMATION
		36"				
		48"				
		60"				

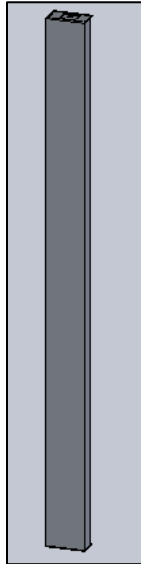


FIG. 1- IL1-S1SA-XX-XX-XXX-LEDX_XXK-UNV-DM1-XXX

GENERAL NOTES:

1. PLEASE COMPLETELY READ THE INSTALL INSTRUCTIONS BEFORE STARTING INSTALLATION.
2. INSTALL IN ACCORDANCE WITH ALL LOCAL, STATE AND NATIONAL CODES CONSULT WITH A QUALIFIED ELECTRICIAN FOR PROPER INSTALLATION.
3. CAREFULLY UNPACK ALL CONTENTS; SOME COMPONENTS MAY HAVE BEEN SHIPPED IN SEPARATE BOXES MOST FIXTURES ARE SHIPPED PARTIALLY ASSEMBLED. SOME UNASSEMBLY MAY BE REQUIRED FOR INSTALLATION.
4. INSPECT EACH COMPONENT RECEIVED; IF ANY COMPONENT SHOWS SIGNS OF DAMAGE OR POTENTIAL FAILURE, STOP INSTALLATION IMMEDIATELY AND CONTACT FACTORY FOR HOW TO PROCEED.
5. DO NOT LET THE LUMINAIRE HANG FREE UNTIL FIXTURE BODY IS SECURED TO BACK BOX.

OCL Architectural Lighting

Phone: 314.863.1895
Fax: 314.863.3278
www.ocl.com

Table of Contents

GENERAL INFORMATION:.....	3
ILLUSION MOUNTING:.....	4

IL1-S1SA-XX-LED-INSTALLATION INSTRUCTIONS

GENERAL INFORMATION:

You will receive the following with each ILLUSION series sconce fixture:

1. ILLUSION LUMINAIRE (Pre-assembled as shown in FIG. 2)
2. INSTALLATION INSTRUCTIONS (shown in FIG. 3) - Please completely read the install instructions before starting installation.

WARNING: Examine all components for any damage before beginning installation.

WARNING: This fixture should be installed by a licensed electrician only.

WARNING: Be careful not to scratch or damage any finished parts.

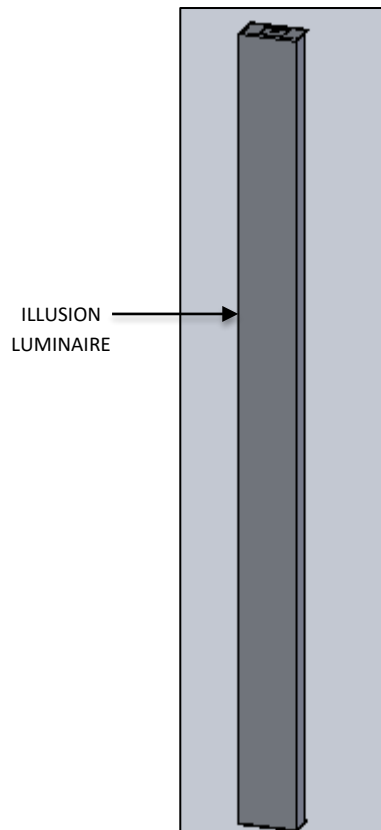


FIG.2 ILLUSION LUMINAIRE (PRE-ASSEMBLED)

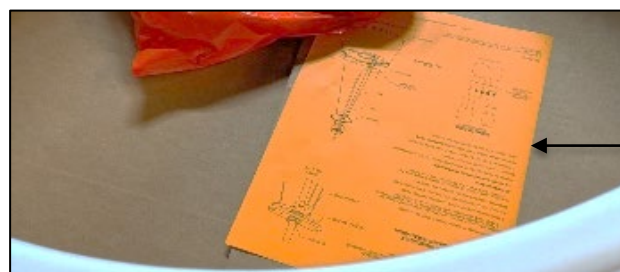


FIG.3 INSTALLATION INSTRUCTIONS

OCL Architectural Lighting

Phone: 314.863.1895

Fax: 314.863.3278

www.ocl.com

IL1-S1SA-XX-LED-INSTALLATION INSTRUCTIONS

ILLUSION MOUNTING:

1. Turn off power.
2. Remove FIXTURE FACE from fixture by removing two HEX SCREWS at the ends as shown in FIG 4.

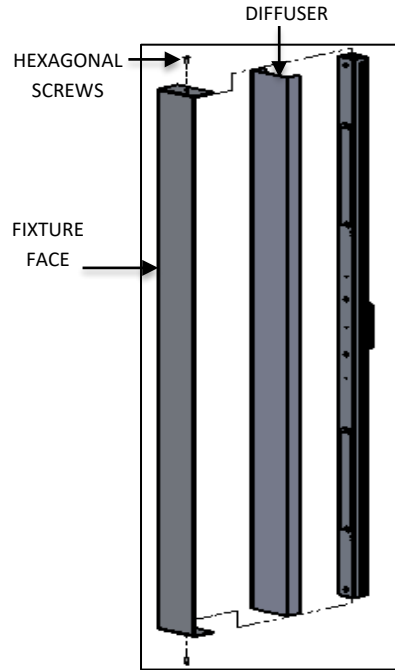


FIG. 4- FIXTURE FACE DIS-ASSEMBLY

3. Remove REFLECTOR from the BACK BOX, by removing two HEX NUTS and LOCK WASHERS disconnect the REFLECTOR from the BACK BOX at the WIRE WHIP as shown below in FIG. 5 and 6.

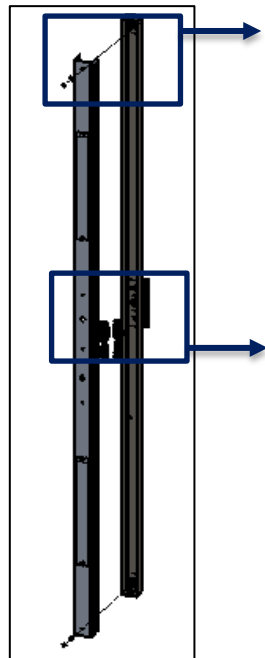


FIG. 5- REFLECTOR DIS-ASSEMBLY

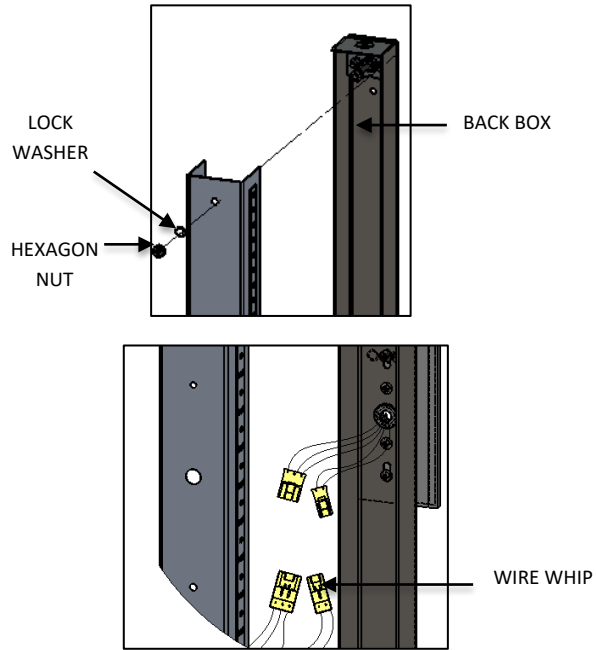


FIG. 6- DETAIL VIEW SHOWING REFLECTOR PLATE AND WIRE WHIP DISASSEMBLY INFORMATION

OCL Architectural Lighting

Phone: 314.863.1895

Fax: 314.863.3278

www.ocl.com

IL1-S1SA-XX-LED-INSTALLATION INSTRUCTIONS

- Temporarily attach BACK BOX to the JUNCTION BOX (by others) with Screws as shown in FIG.7 to translate ANCHOR HOLES location to wall.
- Once the BACK BOX is temporarily fixed, mark the HOLES for installing the ANCHOR BODY (by others) onto the wall. Install the Anchor Body based upon the MOUNTING INFORMATION provided in FIG 8 and 9.

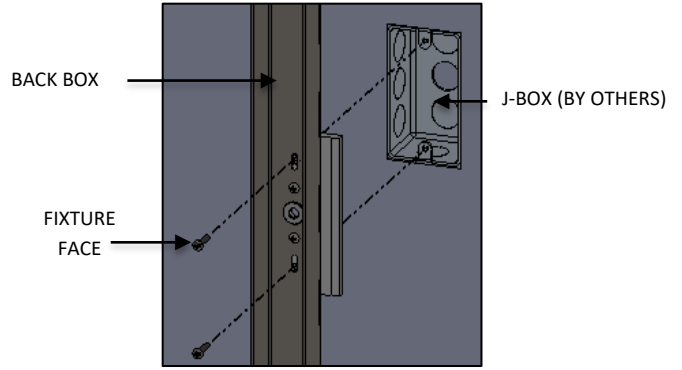


FIG. 7- TEMPORARY INSTALLATION OF BACK BOX

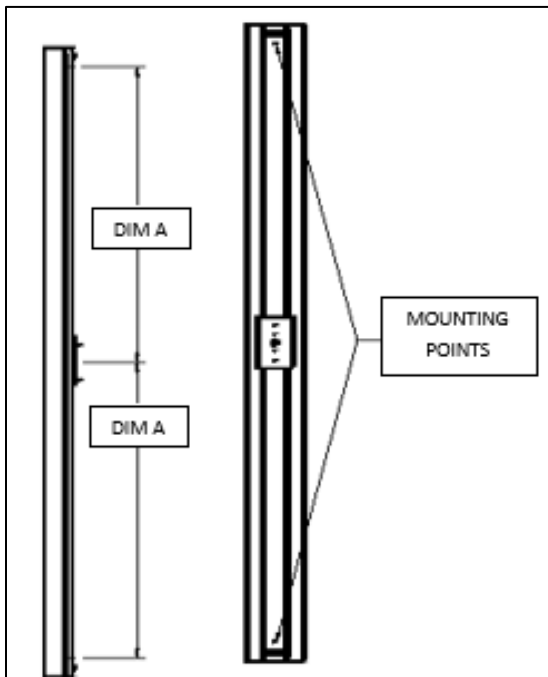


FIG. 8- MOUNTING LOCATION

MOUNTING INFORMATION CHART		
LUMINAIRE SIZE	MOUNTING DISTANCE DIM A	MOUNTING POINTS
24"	9.725"	2
36"	15.375"	2
48"	21.560"	2
60"	27.555"	2

FIG. 9- MOUNTING DISTANCE INFORMATION

- Once the Mounting Points are marked remove the BACK BOX and insert the appropriate ANCHORS (by others) per wall material as shown in FIG.10.

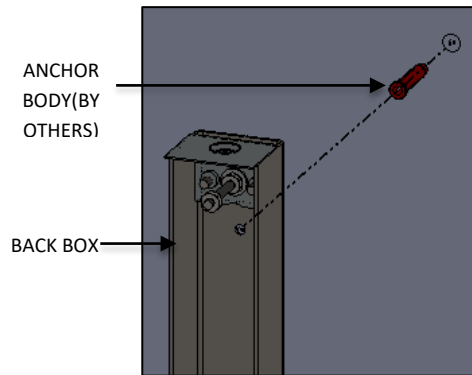


FIG. 10- ANCHOR BODY INSTALLATION

IL1-S1SA-XX-LED-INSTALLATION INSTRUCTIONS

7. Feed WIRE LEADS through center hole in BACK BOX as shown in FIG.11 and make all wire connections in accordance with the national electrical code and applicable local and state codes. See FIG.12 and 13 for wire connections

WARNING:



Do not let the LUMINAIRE hang free until FIXTURE BODY IS SECURED TO BACK BOX.

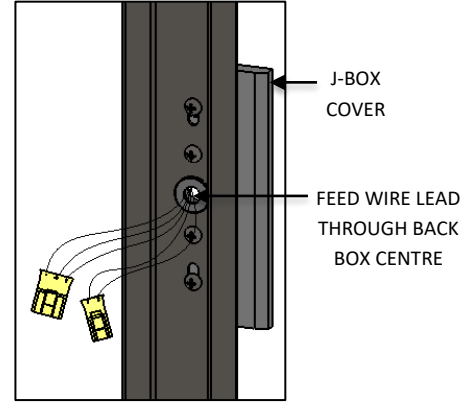


FIG. 11- WIRE LEADS INFORMATION

SERIES	HANGING SYSTEM	BODY SIZE	BODYLIGHT SOURCE	LED OUTPUT	CONTROL	WIRING INFORMATION
1. IL1 (ILLUSION)	S1SA: INDOOR ADA COMPLIANT SCNCE	24"	STATIC WHITE	LED1 & LED2	DM1 (0-10V DIMMING 1%)	SEE PAGE 6 FOR WIRE CONNECTION INFORMATION
		36"				
		48"				
		60"				

WIRE CONNECTIONS:
 BLACK WIRE - LINE VOLTAGE
 WHITE WIRE - NEUTRAL
 GREEN WIRE - GROUND

DMO/DM1 DIMMING OPTION:
 PURPLE WIRE - 0-10V DIMMING +
 GREY WIRE - 0-10V DIMMING -

FIG. 12- WIRE CONNECTION INFROMATION

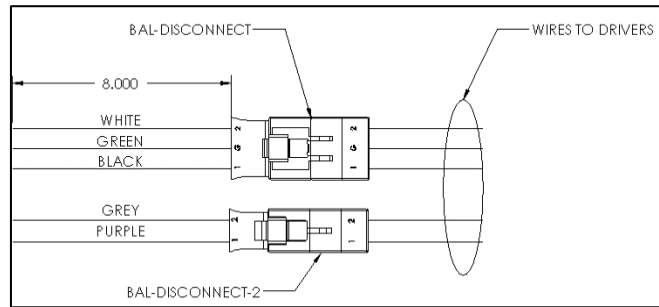


FIG. 13- BALLAST CONNECTOR INFROMATION

8. Reattach back box to JUNCTION BOX (by others) use additional ANCHOR SCREWS (by others) for support shown below in FIG. 14. Plug wire connectors to their corresponding connector between fixture (fixture harness) and building supply (8" WIRE WHIP) as shown below in FIG. 15

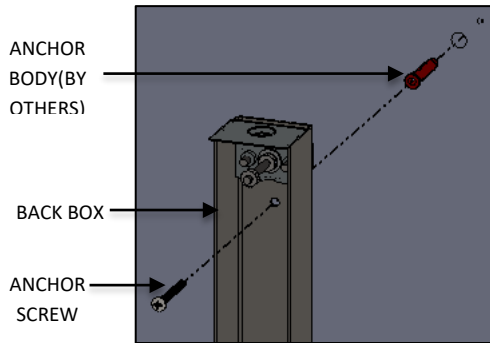


FIG. 14- BACK BOX INSTALLATION

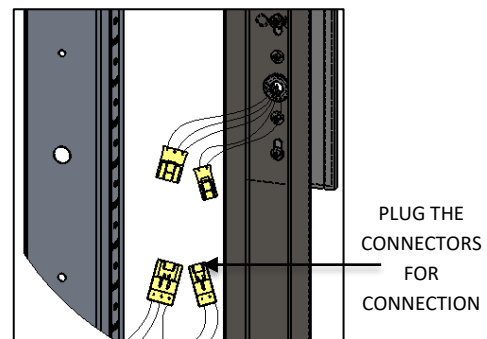


FIG. 15- BACK BOX INSTALLATION

IL1-S1SA-XX-LED-INSTALLATION INSTRUCTIONS

9. Slide REFLECTOR onto the BACK BOX over the long bolts. Tighten REFLECTOR with the HEX NUTS provided as shown in FIG.5. Be careful not to over tighten.
10. Attach FIXTURE FACE to the fixture with the HEX SCREWS provided as shown in FIG.16.

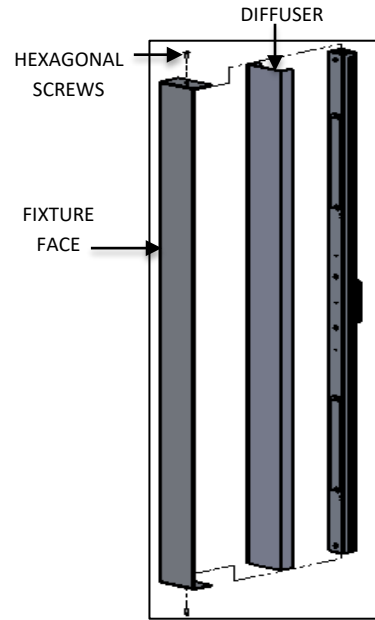


FIG. 16- FIXTURE FACE ASSEMBLY

11. Restore power to circuit the ILLUSION SCONCE series is connected to.
 - a. Test to see that the luminaire turns on after power is restored.
 - b. Contact OCL for any luminaire troubleshooting if a problem occurs.

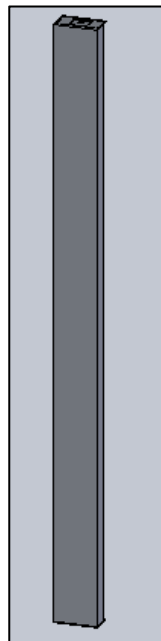


FIG. 17 - COMPLETED INSTALLATION OF
IL1-S1SA-XX-XX-XXX-LEDX_XXK-UNV-DM1-XXX

OCL Architectural Lighting

Phone: 314.863.1895

Fax: 314.863.3278

www.ocl.com