

## INSTALLATION INSTRUCTIONS FIORI INDOOR SCONCE WITH S1SC HANGING SYSTEM

These instructions cover the FIORI luminaire with the following options:

SERIES	HANGING SYSTEM	SIZE	LIGHT SOURCE	CONTROL	WIRE LABEL TABLE
1. FR1 SERIES	S1SC: INDOOR SCONCE	08"	STATIC WHITE	DMO: 0-10V DIMMING 10%  DM1: 0-10V DIM 1%  DM3: LUTRON HI-LUME ECOSYSTEM 1% (LDE1) (NOT AVAILABLE IN 8" OR 2LED1)	WIRE LABEL TABLE ON PAGE 4
2. FR2 SERIES					
3. FR3 SERIES		13" (FOR FR1 SERIES ONLY)	STATIC WHITE		
4. FR4 SERIES					

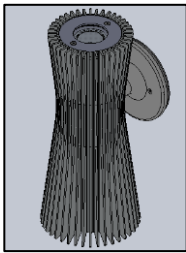


FIG. 1 - FR1-S1SC-13-XX-PTD-2LED1-XXX-UNV-DMO-XXX (AS SHOWN)

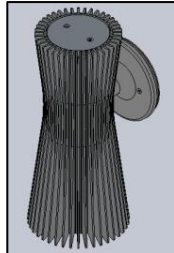


FIG. 2 - FR1-S1SC-13-XX-PTD-LED1-XXX-UNV-DMX-XXX (AS SHOWN)

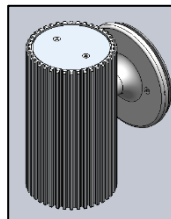


FIG. 3 - FR2-S1SC-08-XX-PTD-LED1-XXX-UNV-DMX-XXX (AS SHOWN)

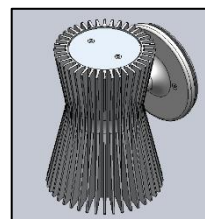


FIG. 4 - FR3-S1SC-08-XX-PTD-LED1-XXX-UNV-DMX-XXX (AS SHOWN)

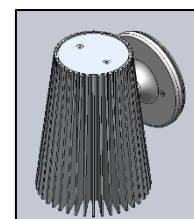


FIG. 5 - FR4-S1SC-08-XX-PTD-LED1-XXX-UNV-DMX-XXX (AS SHOWN)

### GENERAL NOTES:

1. PLEASE COMPLETELY READ THE INSTALLATION INSTRUCTIONS BEFORE STARTING INSTALLATION.
2. TURN OFF POWER TO CIRCUIT FIXTURE WHILE IT IS BEING INSTALLED.
3. INSTALL IN ACCORDANCE WITH ALL LOCAL, STATE AND NATIONAL CODES CONSULT WITH A QUALIFIED ELECTRICIAN FOR PROPER INSTALLATION.
4. CAREFULLY UNPACK ALL CONTENTS; SOME COMPONENTS MAY HAVE BEEN SHIPPED IN SEPARATE BOXES MOST FIXTURES ARE SHIPPED PARTIALLY ASSEMBLED. SOME UNASSEMBLY MAY BE REQUIRED FOR INSTALLATION.
5. DO NOT LET THE FIORI LUMINAIRE HANG FROM THE WIRE CONNECTIONS.
6. DUE TO A CHANGE IN NEC SECTION 410.69 EFFECTIVE IN 2022, THE COLOR PINK WILL BE USED IN PLACE OF GRAY FOR 0-10V CONTROL. NOTE THAT EXISTING SYSTEMS AND FIXTURES MANUFACTURED PRIOR TO 2022 MAY STILL USE GRAY WIRE AS AN UNGROUNDED CONDUCTOR FOR 0-10V CONTROL. CARE SHOULD BE TAKEN WHEN WORKING ON EXISTING SYSTEMS.

**OCL Architectural Lighting**

Phone: 314.863.1895  
Fax: 314.863.3278  
www.ocl.com

## Table of Contents

<b>GENERAL INFORMATION:</b> .....	<b>3</b>
<b>MOUNTING:</b> .....	<b>4</b>
<b>FIORI MOUNTING:</b> .....	<b>4</b>

## FRX-S1SC-INSTALLATION INSTRUCTIONS

### GENERAL INFORMATION:

You will receive the following with each FIORI S1SC Series fixture:

1. FIORI INDOOR SCONCE LUMINAIRE. (as shown in FIG. 6)
2. INSTALLATION INSTRUCTION MANUAL (shown in FIG. 7) - Please completely read the install instructions before starting installation.

**WARNING: Examine all components for any damage before beginning installation.**

**WARNING: This fixture should be installed by a licensed electrician only.**

**WARNING: Be careful not to scratch or damage any finished parts.**

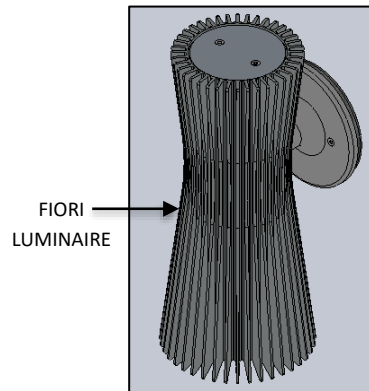
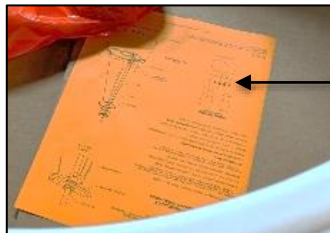


FIG.6 – FIORI INDOOR SCONCE  
LUMINAIRE



INSTALLATION  
INSTRUCTION

FIG.7 - INSTALLATION INSTRUCTION  
MANUAL

**OCL Architectural Lighting**

Phone: 314.863.1895

Fax: 314.863.3278

[www.ocl.com](http://www.ocl.com)

## FRX-S1SC-INSTALLATION INSTRUCTIONS

**MOUNTING:**

**FIORI MOUNTING:**

1. Turn off Power.
2. Disassemble the MOUNTING PLATE from FIORI FIXTURE (CANOPY) by unscrewing TWO SCREWS as shown in FIG. 8 (with 3/32" Allen Key).
3. Attach the MOUNTING PLATE to the JUNCTION BOX (SCREWS BY OTHERS) as shown in FIG. 9. Make sure that the Two fixture MOUNTING HOLES are horizontal.

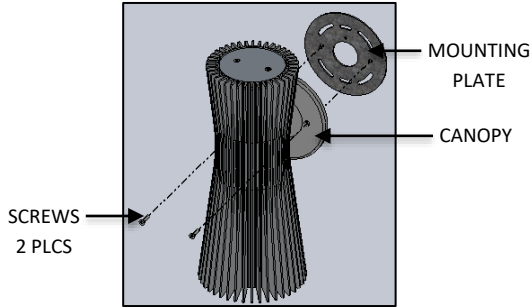


FIG.8 – MOUNTING PLATE DISASSEMBLY

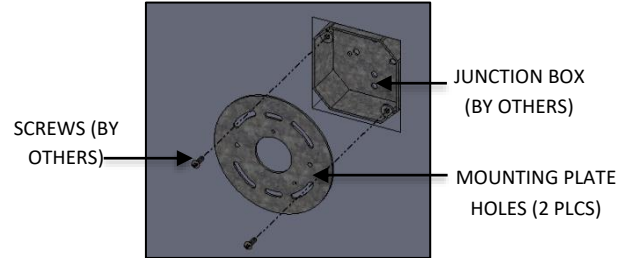


FIG.9 – MOUNTING PLATE ASSEMBLY TO J-BOX (BY OTHERS)

4. Raise FIORI FIXTURE (shown in FIG.10) and make wire connections between Building Supply and fixture inside the JUNCTION BOX (BY OTHERS) in accordance with the National Electrical code and all applicable local and state codes. See WIRE DIAGRAM and WIRE LABEL TABLE shown in FIG. 11 & FIG. 12 for Wire Connections.

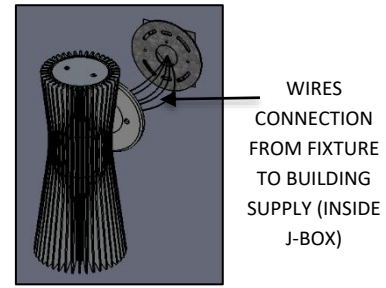
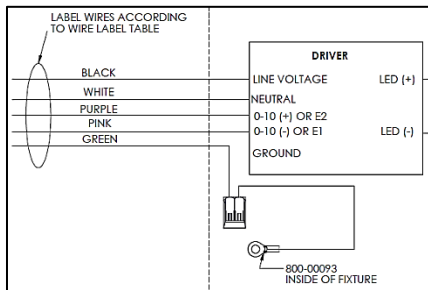


FIG.10 – WIRE CONNECTION TO J-BOX



**WARNING:**  
Make sure to never let the fixture hang from the wire connections.

WIRE DIAGRAM TABLE						
SERIES	HANGING SYSTEM	BODY SIZE	BODYLIGHT SOURCE	LED OUTPUT	CONTROL	WIRE LABEL TABLE
1. FR1	S1SC: INDOOR SCONCE	08"	STATIC WHITE	LED1	DMO: 0-10V DIMMING 10%	WIRE LABEL TABLE ON PAGE 4
2. FR2		13" (FOR FR1 SERIES ONLY)	STATIC WHITE	LED1 LED2 LED3 2LED1	DM1: 0-10V DIM 1%	
3. FR3					DM3: LUTRON HI-LUME ECOSYSTEM 1% (LDE1) (NOT AVAILABLE IN 8" OR 2LED1)	
4. FR4						



SEE GENERAL NOTE 6 ON PAGE 1  
FIG. 11 – WIRE LABEL TABLE

CONTROL	WIRE COLOR	LABEL
ALL	BLACK	LINE VOLTAGE
ALL	WHITE	NEUTRAL
DM0/DM1	PURPLE	0-10V (+)
DM0/DM1	PINK	0-10V (-)
DM3	PURPLE	E2
DM3	PINK	E1
ALL	GREEN	GROUND

FIG. 12 – WIRE LABEL TABLE

**OCL Architectural Lighting**

Phone: 314.863.1895

Fax: 314.863.3278

[www.oclighting.com](http://www.oclighting.com)

**FRX-S1SC-INSTALLATION INSTRUCTIONS**

5. Fasten the FIXTURE to the wall by running the TWO SCREWS through the CANOPY as shown in FIG. 13 and into the MOUNTING PLATE HOLES (tighten with 3/32" Allen Key).

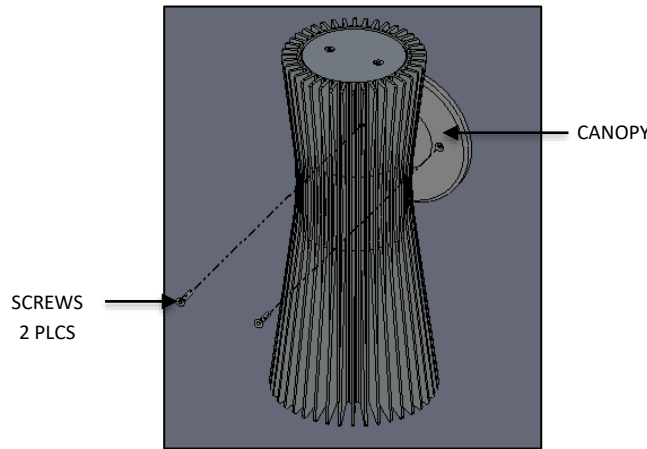


FIG.13 – FIXTURE INSTALLATION

6. Restore power to circuit the FIORI series is connected to.
  - a. Test to see that the luminaire turns on after power is restored.
  - b. Contact OCL for any luminaire troubleshooting if a problem occurs.

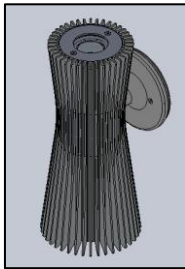


FIG. 14 - COMPLETED INSTALLATION OF FIORI SCONCE WITH S1SC SYSTEM FOR FR1 SERIES (2LED1 OPTION) (AS SHOWN)

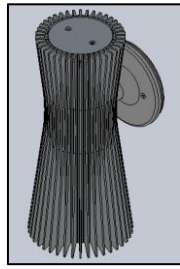


FIG. 15 - COMPLETED INSTALLATION OF FIORI SCONCE WITH S1SC SYSTEM FOR FR1 SERIES (AS SHOWN)

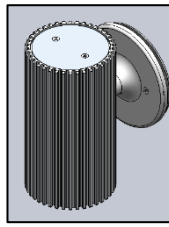


FIG. 16 - COMPLETED INSTALLATION OF FIORI SCONCE WITH S1SC SYSTEM FOR FR2 SERIES (AS SHOWN)

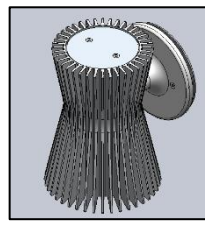


FIG. 17 - COMPLETED INSTALLATION OF FIORI SCONCE WITH S1SC SYSTEM FOR FR3 SERIES (AS SHOWN)

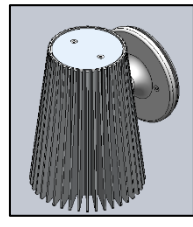


FIG. 18 - COMPLETED INSTALLATION OF FIORI SCONCE WITH S1SC SYSTEM FOR FR4 SERIES (AS SHOWN)