

INSTALLATION INSTRUCTIONS

ARMET OUTDOOR SCONCE WITH O10A HANGING SYSTEM

These Instructions cover the ARMET luminaire with the following options:

SERIES	HANGING SYSTEM	SIZE	LIGHT SOURCE	CONTROL	WIRE LABEL TABLE
1. ARMET (AT1)	O10A: OUTDOOR SCONCE ADA COMPLIANT SCONCE	24" 36" 48" 60"	STATIC WHITE	DM1: 0-10V DIM 1%	WIRE LABEL TABLE ON PAGE 6

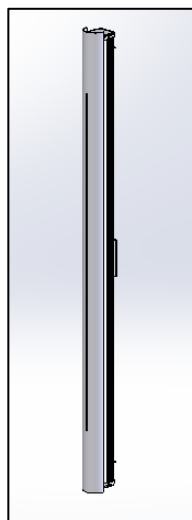


FIG. 1-AT1-O10A-XX-XX-XXX-LEDX_XXK-UNV-DM~

GENERAL NOTES:

1. PLEASE COMPLETELY READ THE INSTALLATION INSTRUCTIONS BEFORE STARTING INSTALLATION.
2. TURN OFF POWER TO CIRCUIT FIXTURE WHILE IT IS BEING INSTALLED.
3. INSTALL IN ACCORDANCE WITH ALL LOCAL, STATE AND NATIONAL CODES CONSULT WITH A QUALIFIED ELECTRICIAN FOR PROPER INSTALLATION.
4. CAREFULLY UNPACK ALL CONTENTS; SOME COMPONENTS MAY HAVE BEEN SHIPPED IN SEPARATE BOXES MOST FIXTURES ARE SHIPPED PARTIALLY ASSEMBLED. SOME UNASSEMBLY MAY BE REQUIRED FOR INSTALLATION.
5. DO NOT LET THE LUMINAIRE HANG FROM THE WIRE CONNECTIONS.
6. DUE TO A CHANGE IN NEC SECTION 410.69 EFFECTIVE IN 2022, THE COLOR PINK WILL BE USED IN PLACE OF GRAY FOR 0-10V CONTROL. NOTE THAT EXISTING SYSTEMS AND FIXTURES MANUFACTURED PRIOR TO 2022 MAY STILL USE GRAY WIRE AS AN UNGROUNDED CONDUCTOR FOR 0-10V CONTROL. CARE SHOULD BE TAKEN WHEN WORKING ON EXISTING SYSTEMS.

OCL Architectural Lighting

Phone: 314.863.1895
Fax: 314.863.3278
www.ocl.com

Table of Contents

GENERAL INFORMATION:	3
MOUNTING:	4
ARMET MOUNTING:	4

ARMET-O10A-LED-INSTALLATION_INSTRUCTIONS

GENERAL INFORMATION:

You will receive the following with each ARMET O10A Series fixture:

1. ARMET OUTDOOR SCONCE LUMINAIRE. (as shown in FIG. 2)
2. INSTALLATION INSTRUCTION MANUAL (shown in FIG. 3) - Please completely read the install instructions before starting installation.
3. RED BAG (shown in FIG. 3)
 - i. TWO (2) ANCHOR BODY (shown in FIG. 4)
 - ii. TWO (2) ANCHOR SCREWS (shown in FIG. 4)
 - iii. TWO (2) SEALING WASHERS (shown in FIG. 4)

WARNING: Examine all components for any damage before beginning installation.

WARNING: This fixture should be installed by a licensed electrician only.

WARNING: Be careful not to scratch or damage any finished parts.

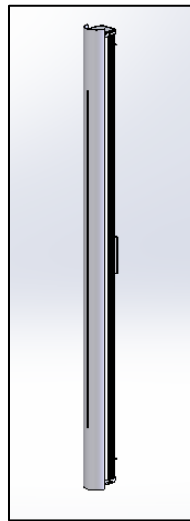


FIG.2 – ARMET LUMINAIRE (AS SHOWN)

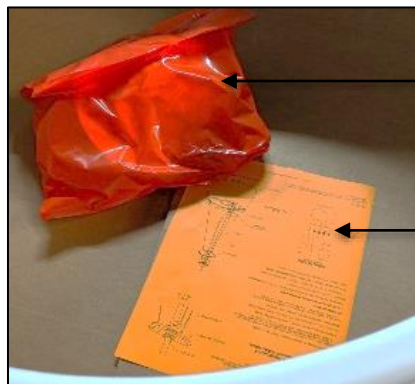


FIG.3 - RED BAG AND INSTALLATION INSTRUCTION MANUAL

RED BAG

INSTALLATION INSTRUCTION

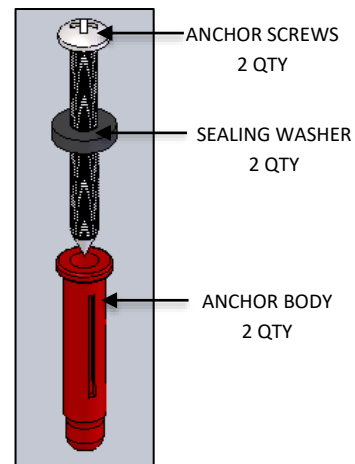


FIG.4 – MOUNTING HARDWARE

ANCHOR SCREWS
2 QTY

SEALING WASHER
2 QTY

ANCHOR BODY
2 QTY

OCL Architectural Lighting

Phone: 314.863.1895

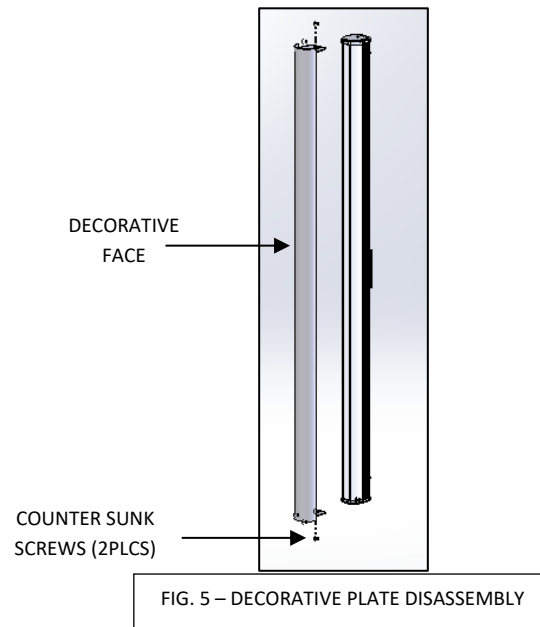
Fax: 314.863.3278

www.ocl.com

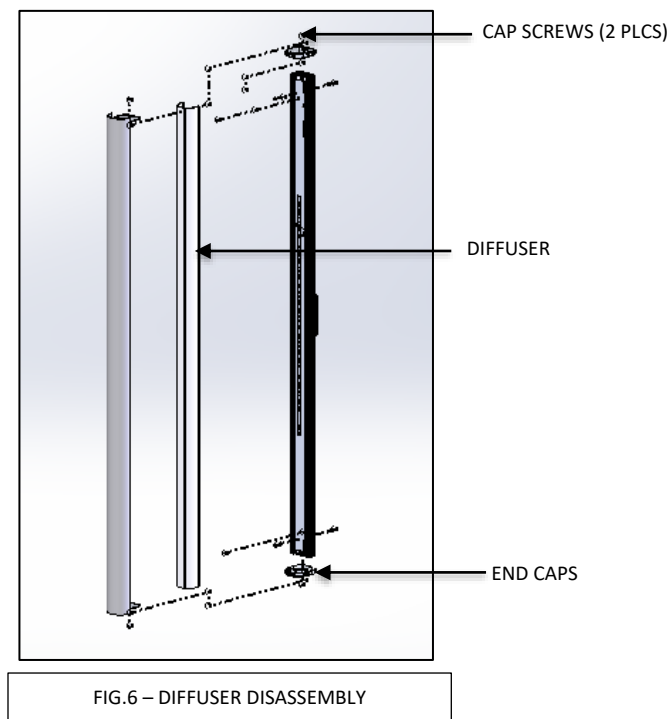
MOUNTING:

ARMET MOUNTING:

1. Turn off Power.
2. Remove the DECORATIVE FACE by unscrewing the SCREW on each end as shown in FIG. 5.



3. Remove the END CAPS by unscrewing the CAP SCREWS and remove the DIFFUSER by sliding it outwards as shown in FIG. 6.



OCL Architectural Lighting

Phone: 314.863.1895

Fax: 314.863.3278

www.ocl.com

ARMET-O10A-LED-INSTALLATION_INSTRUCTIONS

4. Unscrew the two #8-32 HEX NUTS and remove the REFLECTOR ASSEMBLY from the EXTRUDED BACK HOUSING as shown in FIG.7.

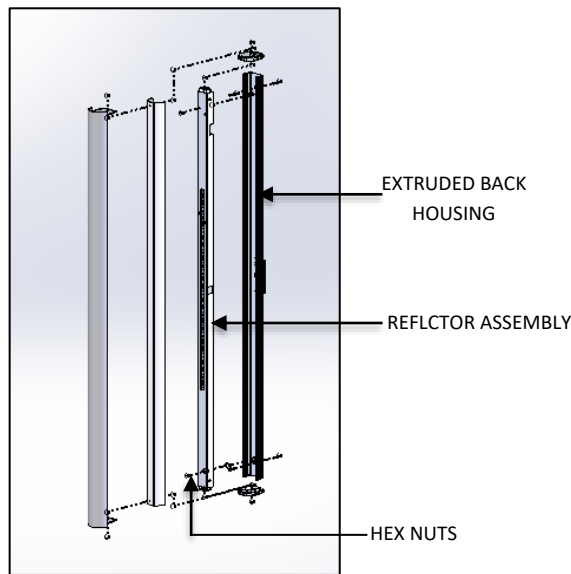


FIG.7- DISASSEMBLY OF REFLECTOR

5. Pull the BUILDING SUPPLY WIRES through the BACK HOUSING ASSEMBLY and mount the BACK HOUSING ASSEMBLY to the JUNCTION BOX. Mark the placement for the provided wall ANCHORS through the holes near the top and bottom of the BACK HOUSING as shown in FIG.8,9 &10.

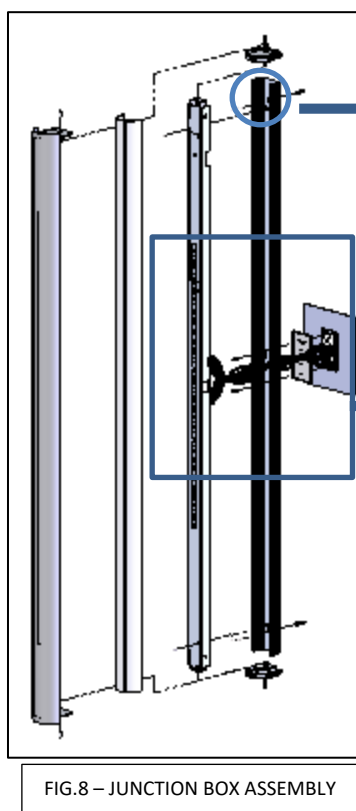


FIG.8 – JUNCTION BOX ASSEMBLY

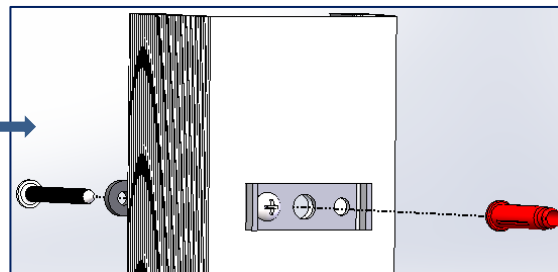


FIG.9– PLACEMENT OF ANCHORS

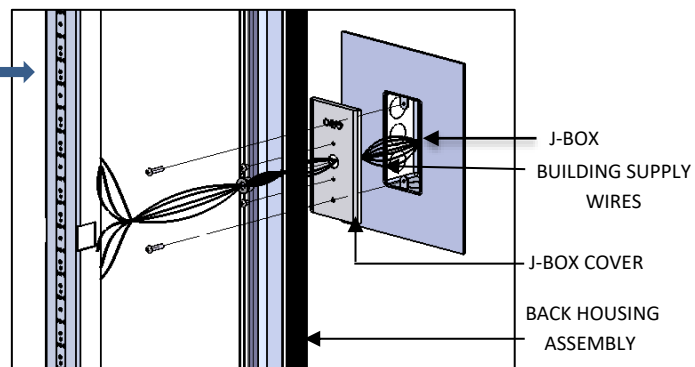


FIG.10 – WIRING CONNECTION

OCL Architectural Lighting

Phone: 314.863.1895

Fax: 314.863.3278

www.oclighting.com

ARMET-O10A-LED-INSTALLATION_INSTRUCTIONS

- Mark ANCHOR HOLE locations on wall using BACK-CHANNEL. Drill 3/16" dia. holes and insert provided ANCHORS as shown in FIG. 11.

NOTE: Apply Thick Bead of Silicone around J-BOX. Failure to do so will void all warranties. Make sure that Bead is completely outside of fixture mounting hole location.

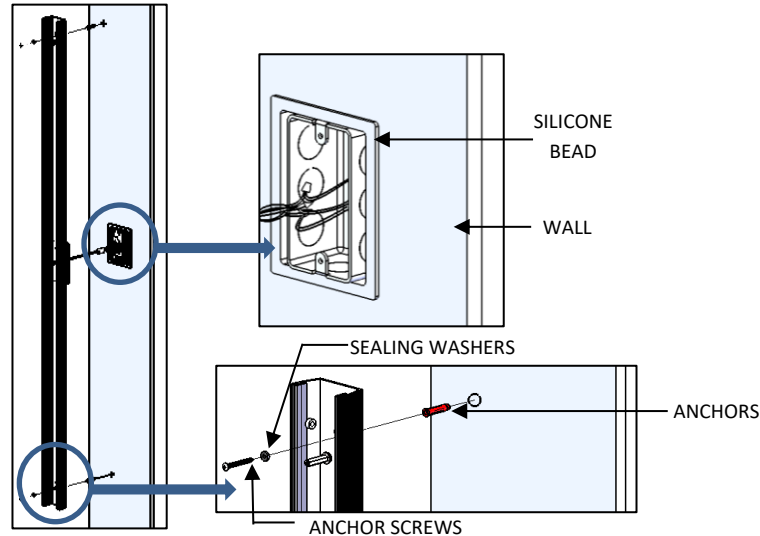


FIG.11 – BACK-CHANNEL ASSEMBLY TO J-BOX

- Make all wire connections between the REFLECTOR ASSEMBLY and BUILDING SUPPLY WIRES in accordance with NATIONAL ELECTRICAL CODE and applicable LOCAL AND STATE CODES. Push the wire connections back into the J-BOX.SEE WIRE LABEL TABLE as shown in FIG.12 for wire connections.

WIRE DIAGRAM TABLE						
SERIES	HANGING SYSTEM	BODY SIZE	BODYLIGHT SOURCE	LED OUTPUT	CONTROL	WIRE LABEL TABLE
1. ARMET (AT1)	O10A: OUTDOOR SCONCE ADA COMPLIANT SCONCE	24" 36" 48" 60"	STATIC WHITE	LED1 LED2	DM1: 0-10V DIM 1%	WIRE LABEL TABLE ON PAGE 6

WIRE LABEL TABLE		
CONTROL	WIRE COLOR	LABEL
ALL	BLACK	LINE VOLTAGE
ALL	WHITE	NEUTRAL
ALL	PURPLE	DM1 (+)/DM3 (+)
ALL	PINK	DM1 (-)/DM3 (-)
ALL	GREEN	GROUND

SEE GENERAL NOTE 6 ON PAGE 1

FIG. 12 – WIRE LABEL TABLE

OCL Architectural Lighting

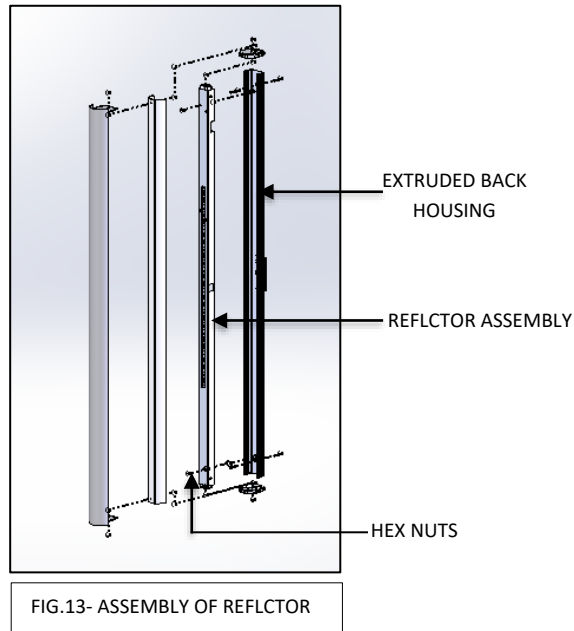
Phone: 314.863.1895

Fax: 314.863.3278

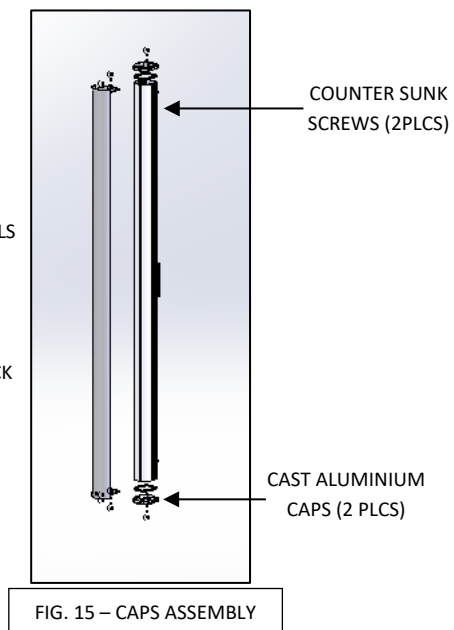
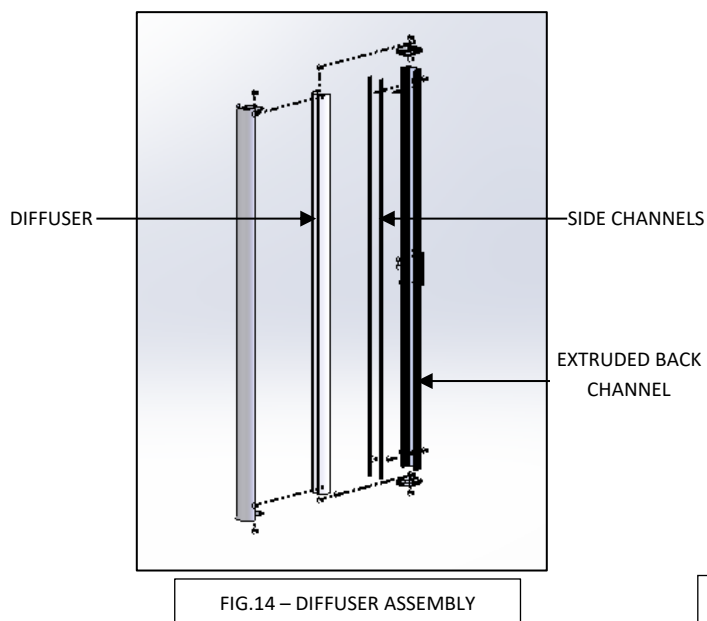
www.oclighting.com

ARMET-O10A-LED-INSTALLATION_INSTRUCTIONS

8. Reattach the REFLECTOR to the BACK CHANNEL using the #8-32 HEX NUTS provided as shown in FIG.13.



9. Reattach DIFFUSER by pushing the legs into the SIDE CHANNELS. Make sure top and bottom are flush with the ends of the EXTRUDED BACK CHANNEL provided as shown in FIG.14.
10. Reattach the CAST ALUMINIUM CAPS and secure with the COUNTER SUNK SCREWS provided as shown in FIG.15.



ARMET-O10A-LED-INSTALLATION_INSTRUCTIONS

11. Reattach the DECORATIVE FACE to the FIXTURE with the HARDWARE provided as shown in FIG.16.

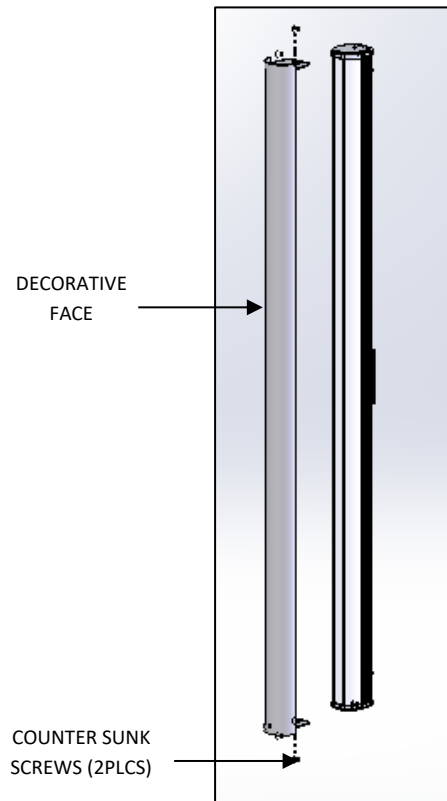


FIG. 16 – FINAL ASSEMBLY

12. Restore power to circuit the series is connected to.
- Test to see that the luminaire turns on after power is restored.
 - Contact OCL for any luminaire troubleshooting if a problem occurs.

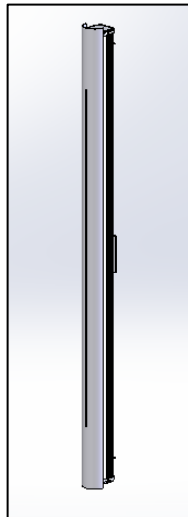


FIG. 17-AT1-O10A-XX-XX-XXX-LEDX_XXK-
UNV-DM~

OCL Architectural Lighting

Phone: 314.863.1895

Fax: 314.863.3278

www.ocl.com