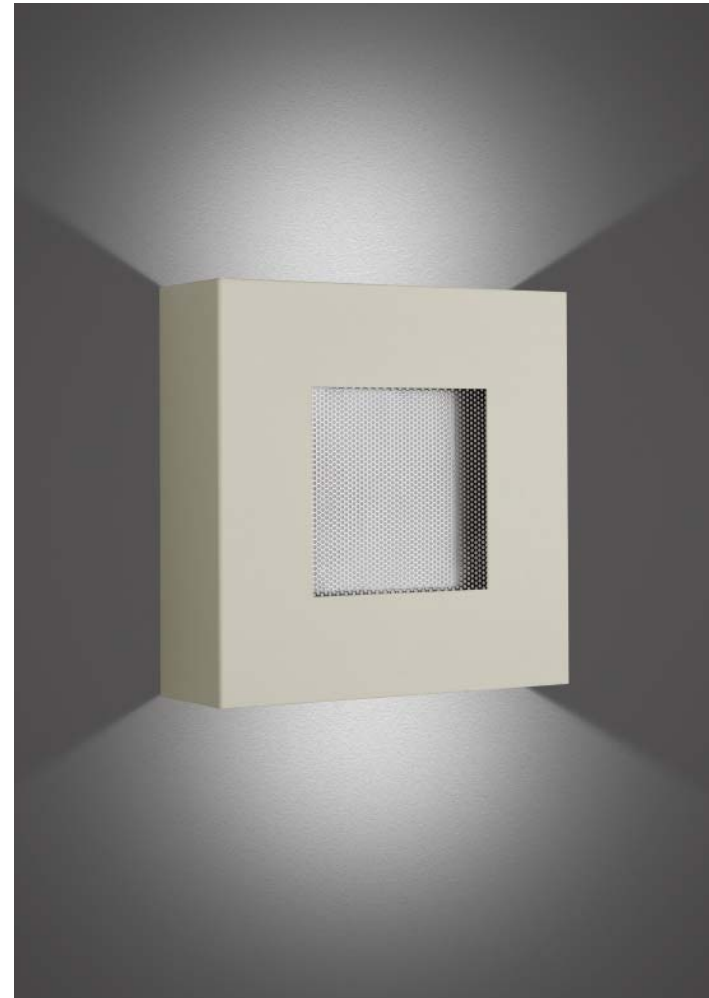
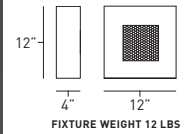
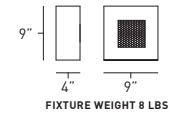


SD1-S1SA-12-GW-BAL

ADA





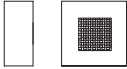

SD2-S1SA-12-GW-KAP

ADA



FEATURES

- The Shadow features a sheet metal face formed from 0.064" thick aluminum.
- Decorative metal inserts are available in either perforated aluminum or basket weave, and are backed with an acrylic diffuser.
- Consult factory for modified face designs or acrylic colors.
- Virgin white acrylic is UV stable and UL-94 HB Flame Class rated.
- OCL metal finishes are applied by hand and receive a protective clear coat lacquer.
- 21 standard powder coat paints offered, however all RAL colors available.
- Fixture offered with a variety of compact fluorescent and incandescent optic packages.
- Contact factory for additional modifications or options.

SERIES	HANGING SYSTEM	SIZE	DIFFUSER	FINISH	LAMPING (PHOTOMETRIC TEST #)	VOLTAGE	OPTIONS
 <p>SD1 (BASKET WEAVE)</p>  <p>SD2 (PERFORATED METAL)</p>	<p>S1SA INDOOR ADA COMPLIANT SCONCE</p> 	09	<p>GW GLOSS WHITE ACRYLIC</p>	<p>BAL BRUSHED ALUMINUM</p> <p>PTD PAINTED - SPECIFY CODE (EX. BKP FOR BLACK PAINT, SEE PAGE 492 FOR PAINT OPTIONS)</p>	<p>9" </p> <p>2QD13 2@13W QD (11632.0)</p> <p>2IN40 2@40W IN</p> <p>12" </p> <p>2QD26 2@26W QD (12391.0)</p> <p>2IN40 2@40W IN (13780.0)</p>	<p>120</p> <p>277</p> <p>347</p>	<p>DMA ADVANCE® DIMMING BALLAST</p> <p>DML LUTRON® DIMMING BALLAST</p> <p>EMR REMOTE MOUNT EMERGENCY (9" SIZE ONLY)</p> <p>EMI INTEGRAL EMERGENCY (12" SIZE ONLY)</p> <p>FUS FUSED</p> <p>ULD UL DAMP LABEL</p> <p>TLP TOP LENS PRISMATIC ACRYLIC (ONLY ON FLUORESCENT)</p> <p>BLP BOTTOM LENS PRISMATIC ACRYLIC (ONLY ON FLUORESCENT)</p>
		12					
<p>☑ SPECIFY CATALOG CODE</p>							

SAMPLE CODE: **SD2-S1SA-12-GW-KAP-2QD26-120-EMI**

↑ PHOTOMETRIC INFORMATION AVAILABLE AT WWW.OCL.COM

- Fixture mounts to a standard 4" J-box (supplied by others).
- Bodine® emergency ballast available, standard with remote mounted test switch and indicator light.
- Advance® and Lutron® dimming ballasts available. Controls not included.
- Integral HPF electronic fluorescent ballast with Class A sound rating (3-5 year ballast warranty depending on ballast specification).
- Fixture is ADA compliant.
- For photometric data, please visit www.ocl.com.
- For lamp and base information, see pages 496-505 in the reference section.
- For specific mounting instructions, please contact factory.
- Five year product warranty.